

Tool & Product Update

Makers of Huck®, Marson®, Recoil®
Brand Fasteners, Tools & Accessories

Nose Assembly to Tool Adapter Matrix and Drawings

On the following page is a list of every currently available Adapter Assembly combination. Please use the list as a reference when selecting a Nose Assembly to Tool Adapter.

For each Adapter Assembly, a reference drawing is supplied on the following pages unless otherwise stated.

If a Stroke Limiter is required, the part number is listed under "Comments". If no part number is listed, and a Stroke Limiter is required, please call Customer Service at the toll-free number below to obtain the correct part number.

For more information or to order, please contact your local distributor or call direct:

Alcoa Fastening Systems

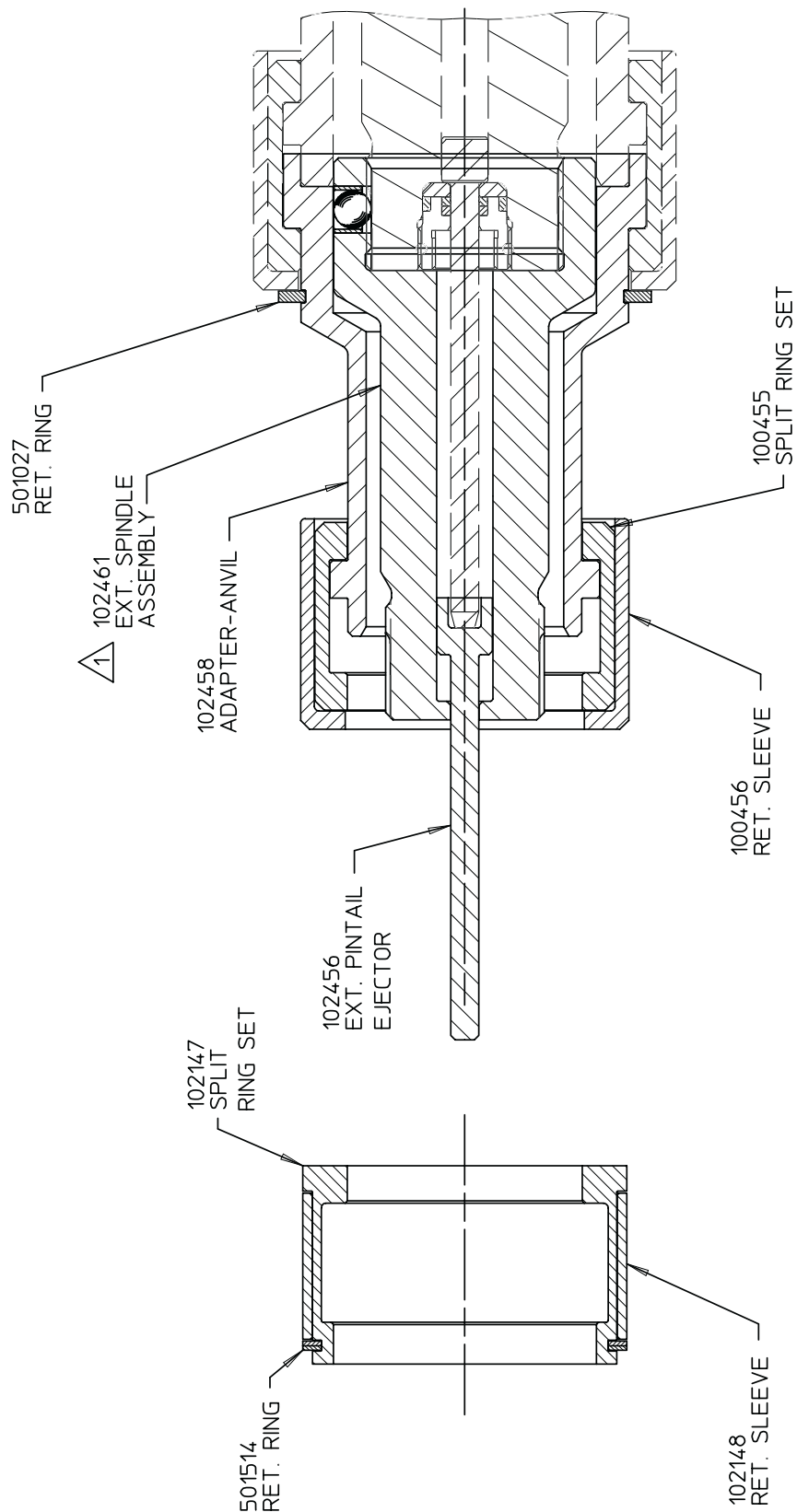
1 Corporate Drive
Kingston, NY 12401
800-278-4825



NOSE ADAPTER MATRIX AND DRAWINGS

(CONTINUED)

PART NO.	NOSE ASSEMBLY TYPE	TOOL TYPE	COMMENTS	PAGE
102460	5901 & 2620	585 & 586		3
102463	352 style Inline	353, 245, 255		4
103553	505, 585, 586	506		5
103554	506 style	507		6
104406	350, 352 Inline	200		7
104627	352 Rotatable Adapter	352	Allows 352 Noses to Rotate	8
104632	353 Rotatable Adapter	353	Allows 353 Noses to Rotate	9
113272	Offset for UNIMATIC BR	212, 2480		10-11
117831	99-1500s Rotatable Adapter 99-1500s Rotatable Adapter 99-1500s Rotatable Adapter	245 style 2502-625 2580	Stroke Limiter 118362 Req'd Stroke Limiter Req'd (call for Part No.) Stroke Limiter Req'd (call for Part No.)	12
119327	352 style	G743		13
119400-1	99-3700s & 1700s -05,06,08 Offset 99-3700s & 1700s -05,06,08 Offset	245, 255 style 2580 style	Stroke Limiter 118362 Req'd Stroke Limiter PR2344 Req'd	14
120804	99-1500s Rotatable Adapter 99-1500s Rotatable Adapter	245 style 2580	Stroke Limiter 118362 Req'd Stroke Limiter Req'd (call for Part No.)	15
121395	Spindle/Piston to fit 230 style Noses	245, 255 style		16
121991		HK-150	Connects to TM6CC and TM8CC	n/a
122134	99-1700s -10,12 Lockbolt 99-1700s -10 Lockbolt	2502-625 245, 255 style		17
122140	99-1700s -05,06 Rotatable Adapter	230		18
122140-1	99-3700s	230		19
122140-G83	99-1700s	G83		20
122140-G83-1	99-3700s	G83		21
122145	99-1700s -05,06,08 Rotatable Adap	2480		22
122145-1	99-1700s Offs -05,06 BB/BR Rot.Ad	202, 2012		23
122145-3	99-3700s	244, 2480, 202, 2012		24
122145-4	99-3700s	244		25
122587	99-S456	HK-150		26
122921	99-A, 99-1100, & Olympic series	194, 227		27
123065	353 style	230	1/2" Stroke max	28
123065-1	353 style	244	3/8" Stroke max	29
123437	99-1100s Offset BR	230 ONLY		30
123437-1	99-1100s Offset BR	202, 2012		31
123437-2	HUCKLINCH Offset	202, 2012		32
123437-3	HUCKLINCH Offset	230 ONLY		33
124113	352 style Inline; 1/4 max	206-375, 206-625		34
124113-1	3/8 Pass Thru 353 style noses	208-625		35
124164	99-1700s Offset	252		36
124977	353 style	5901, 2620 style		37
125770	99-1500s Offset	208-625	formerly PR2022	38
126358	Anvil & Collet Extension 352 style	202	length 6.00"	39
126361	Anvil & Collet Extension 352 style	202	length 3.00"	40
127671	244 352 style noses	PT4000	up to & including -06 dia.	41
127715	352 & 2480 style noses	HK-150	with pass thru cap	42
127723	244 352 style noses	PT4000	up to & including -08 dia.	43
127863	Self-Releasing L-suffix noses only	HK-150		44
PR1227	586 style nose Extension		length 6.00"	45

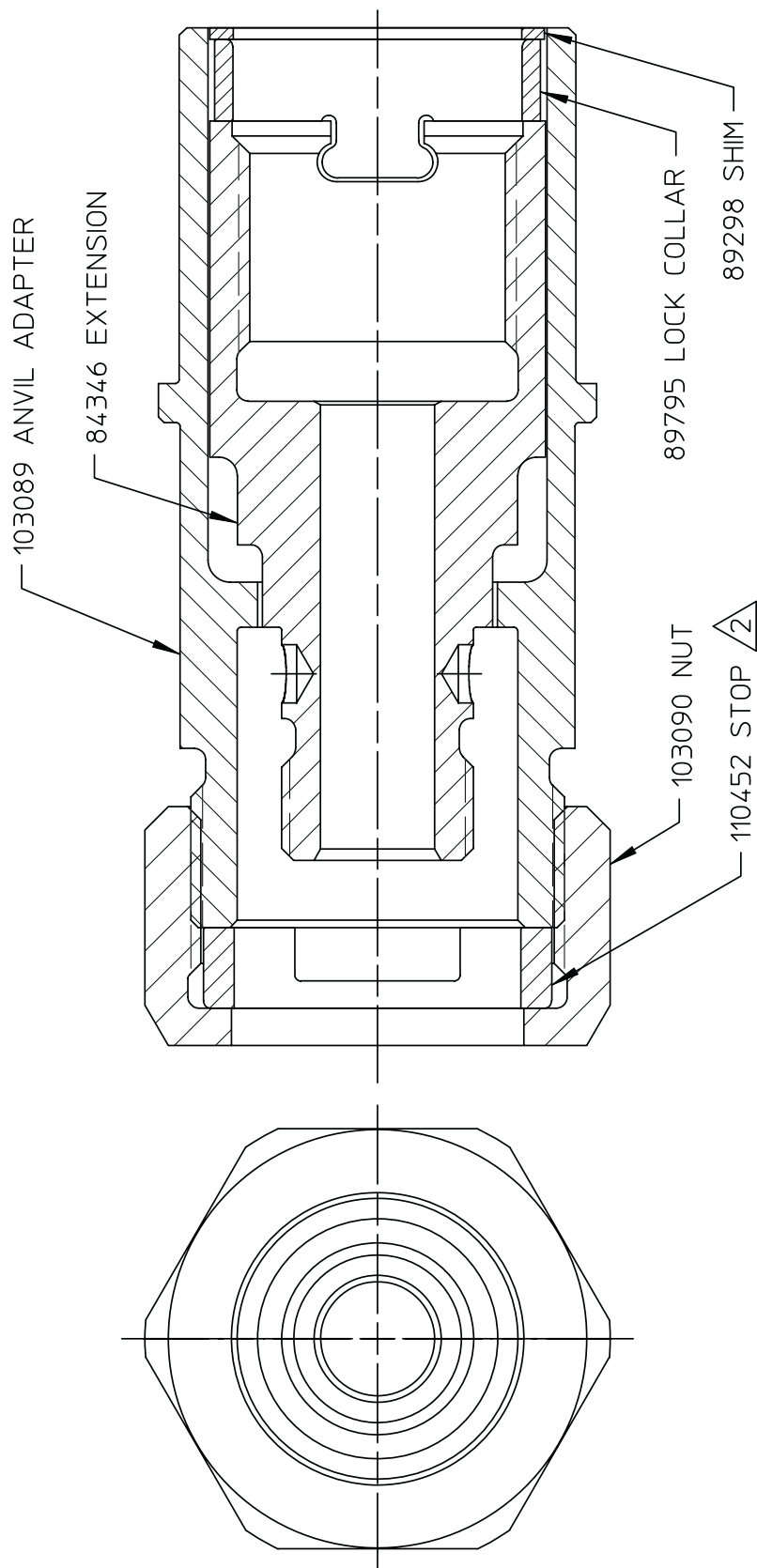


NOTES

- 1 102461 SPINDLE EXTENSION ASSEMBLY, CONSISTS OF:
102457 EXTENSION SPINDLE; AND 101284 COLLET LOCK
ASSEMBLY.

Alcoa Fastening Systems Commercial Products 1 Corporate Drive, Kingston, NY 12401		
TYPE:	ADAPTER ASSEMBLY	
FASTENER:	N/A	
TOOL(S):	504 NOSE TO 585/586 TOOL	
Notes:	Product Revision:	J
US Patent:	Date: 07/24/03	

Part Number
102460

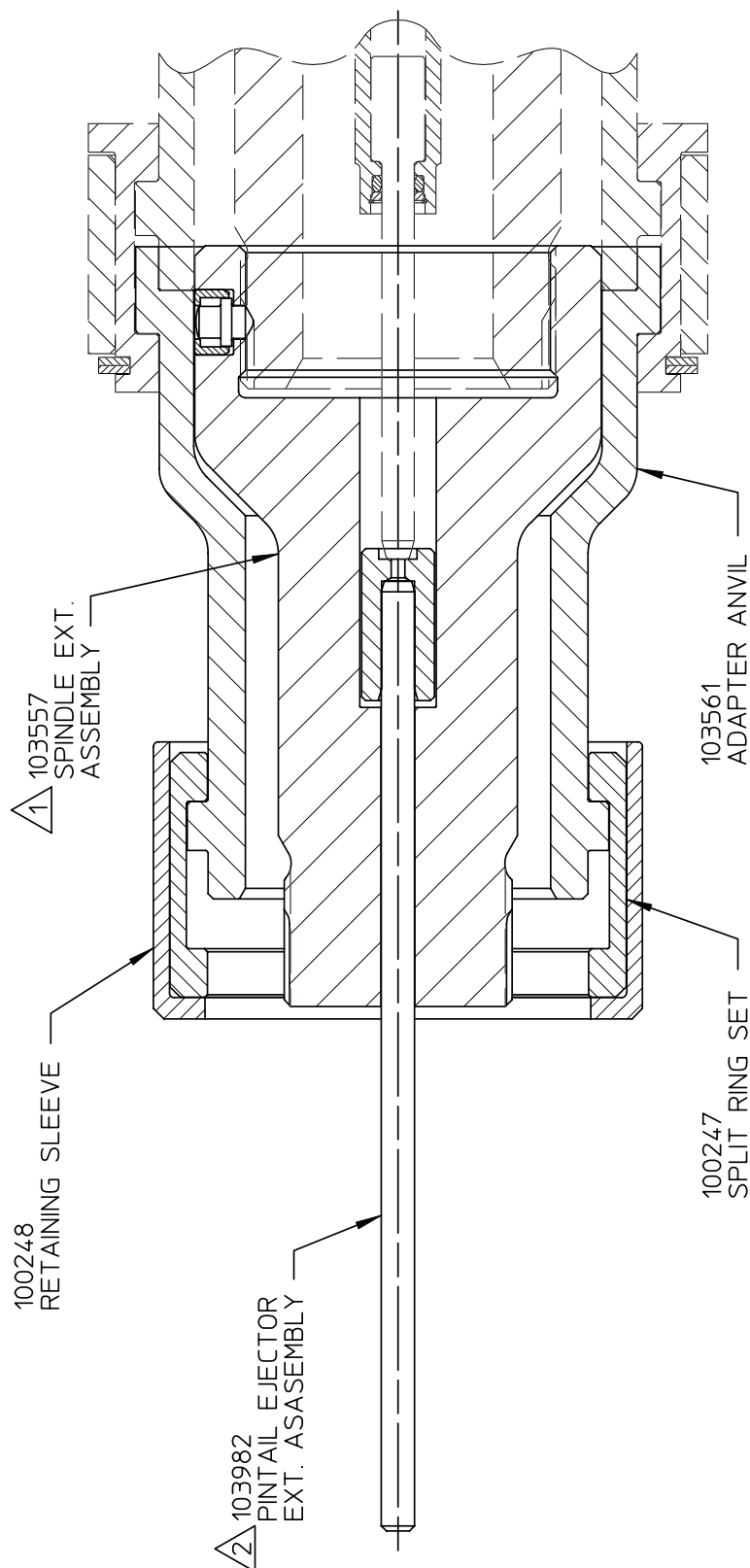


NOTES:

- 1 THIS ASSEMBLY USED TO ADAPT 352 NOSE ASSEMBLIES ONTO 353, 354, 115 AND 4800 INSTALLATION TOOLS AND ALLOWS THE ANVIL TO BE ROTATED TO POSITION FLAT.

- 2 SLOTS TO BE LOCATED OVER EARS OF P/N 106795 RETAINER (ON ROTATABLE NOSES ONLY) AND ORIENTED FACING THE TOOL AS SHOWN.

Alcoa Fastening Systems Commercial Products 1 Corporate Drive, Kingston, NY 12401		Part Number	
TYPE:	ROTATABLE ADAPTER ASSEMBLY	102463	
FASTENER:	N/A		
TOOL(S):	352 TO 353		
Notes:		Product Revision:	K
US Patent:		Date:	07/24/03

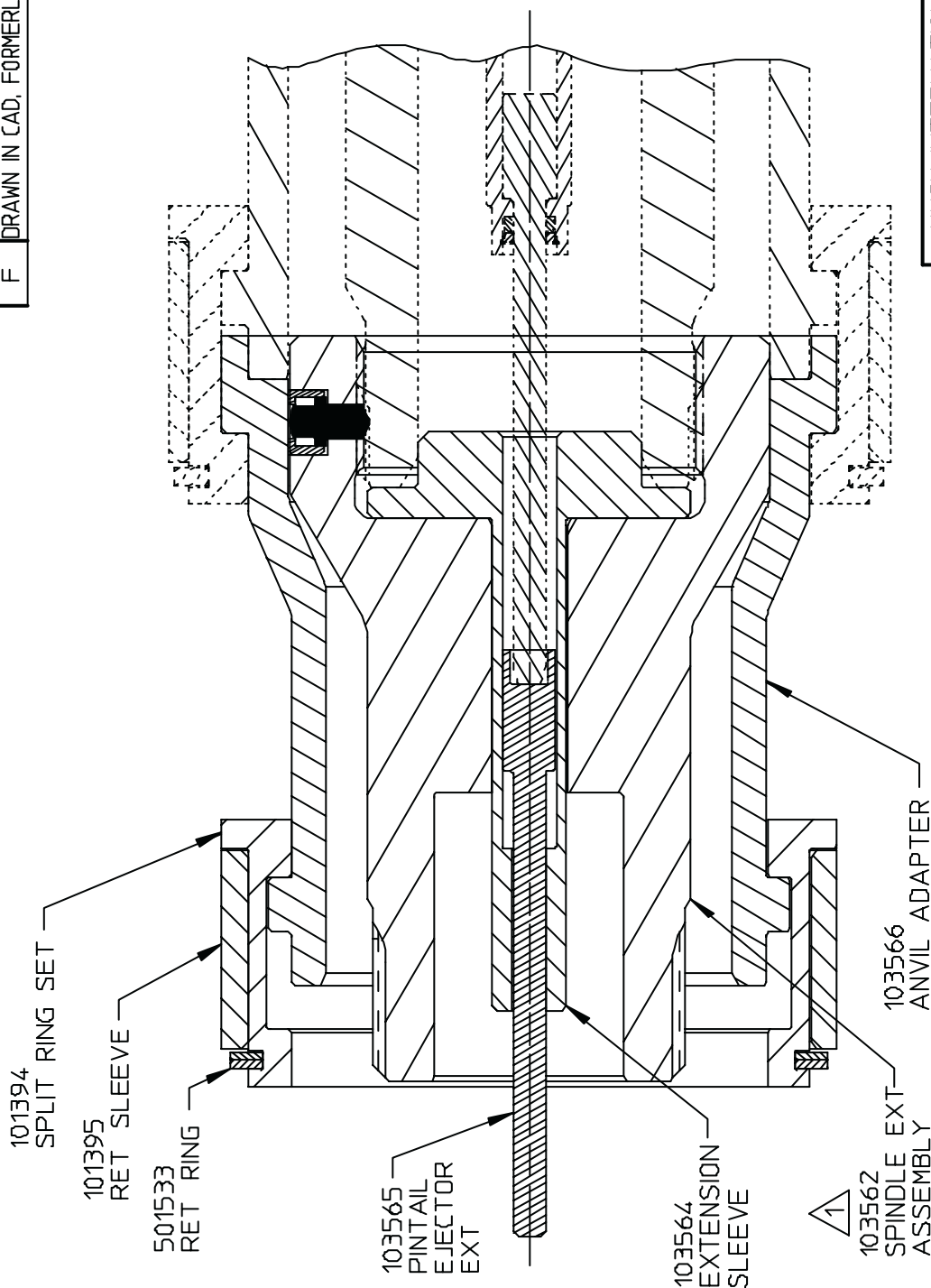


NOTES:

- 1 SPINDLE EXTENSION 103557 CONSISTS OF:
RETAINER 102879, PIN-COLLET LOCK 102880
AND SPINDLE EXTENSION 103558.
- 2 PINTAIL EJECTOR EXTENSION 103982 CONSISTS OF:
ROD 121398, AND ROD END 121399.

Alcoa Fastening Systems Commercial Products 1 Corporate Drive, Kingston, NY 12401		Part Number	
TYPE:	ADAPTER	103553	
FASTENER:	N/A		
TOOL(S):	ADAPTS 505, 585 & 586 TO 506		
Notes:		Product Revision:	F
US Patent:		Date:	07/22/03

REV	DESCRIPTION	DATE
F	DRAWN IN CAD, FORMERLY NSD	05/07/01



NOTES



103562 SPINDLE EXTENSION ASSEMBLY CONSISTS OF
102858 PIN-COLLET LOCK, 102879 RETAINER, AND
103563 SPINDLE EXTENSION

HUCK INTERNATIONAL, INC., I.S.D.
1 CORPORATE DRIVE, P.O. BOX 2270
KINGSTON, NEW YORK 12401

ADAPTER ASSEMBLY
506 NOSES TO 507 TOOL

DET/W DATE 05/07/01

FOC
FAC

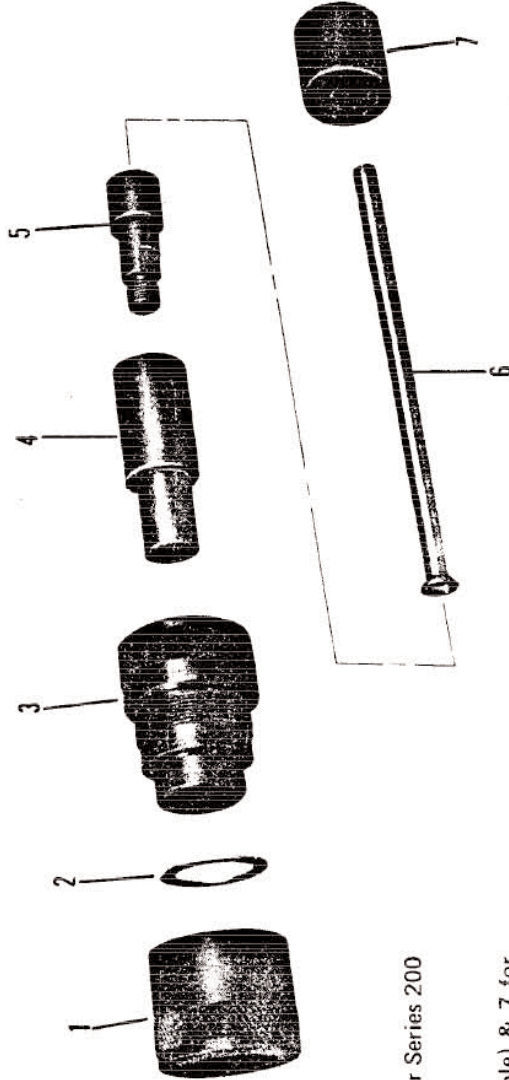
B

103554



Alcoa Fastening
Systems

DATA SHEET



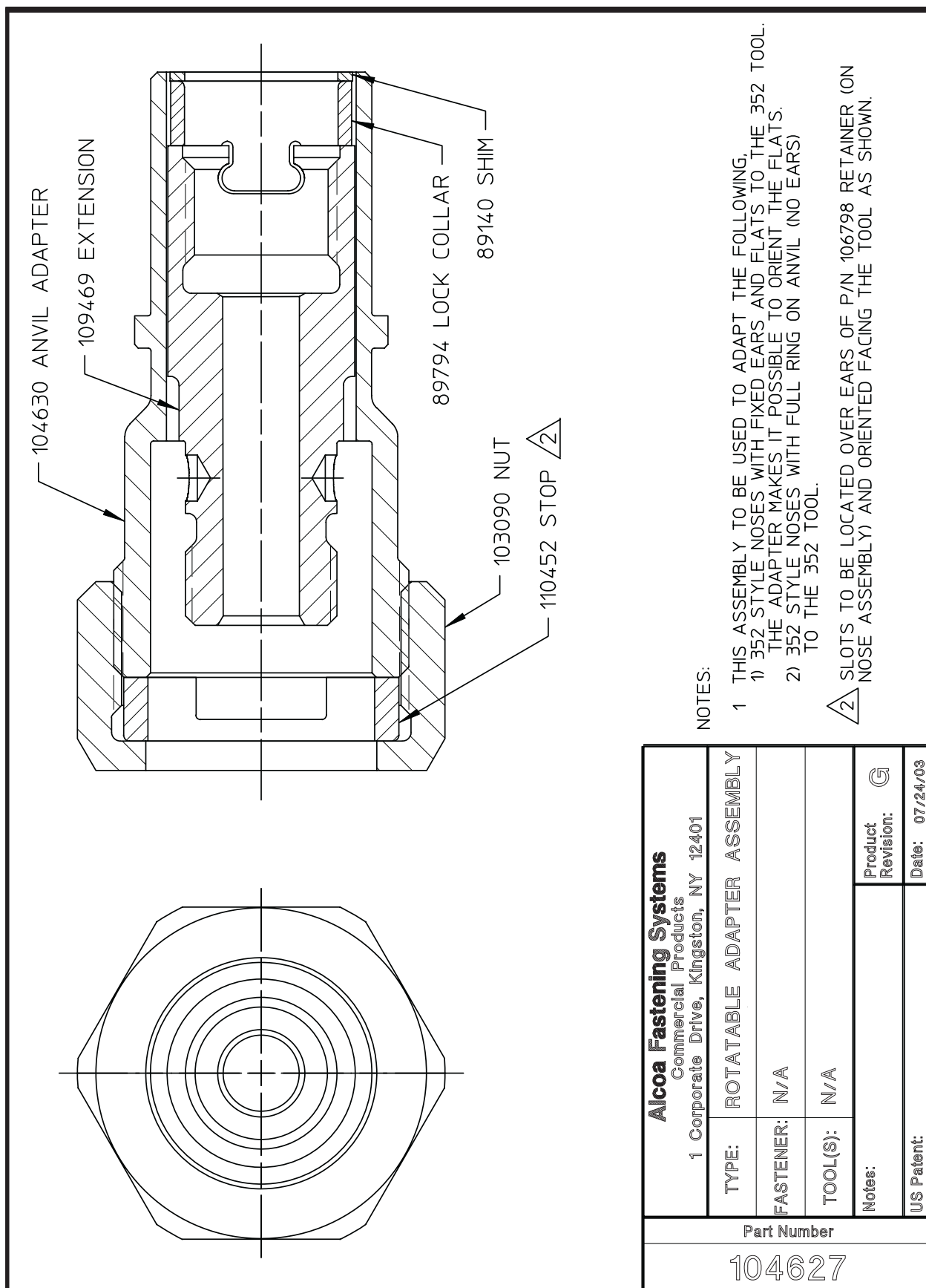
Use Ref. Nos. 1 (& 6 as applicable) for Series 200
Nose Assemblies (Double Action).

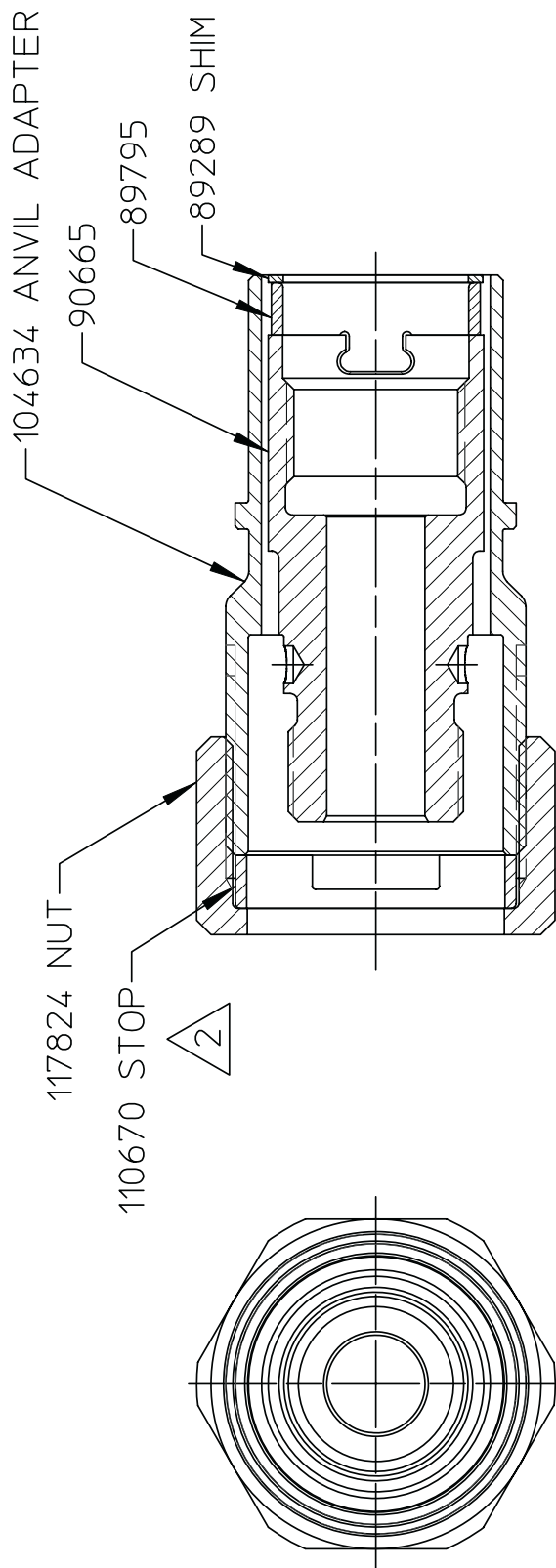
Use Ref. Nos. 1 & 2 (& 6 as applicable) & 7 for
Series 352 Nose Assemblies (Single Action).

Use Ref. Nos. 1, 2, 3, 4, 5 (& 6 as applicable) for
Series 350 Nose Assemblies (Double Action).

REF. NO.	PART NO.	QUANTITY	PART NAME
5-1	100530	1	Retaining Nut
5-2	101280	1	Stop - Retaining Nut
5-3	100533	1	Nose Adapter
5-4	100532	1	Shift Sleeve
5-5	100531	1	Spindle Reducer
5-6	100534	1	Pintail Tube
5-7	100536	1	Outer Anvil Adapter

Alcoa Fastening Systems Commercial Products 1 Corporate Drive - Kingston, NY 12401		PRODUCT	1-90
TYPE: Spindle Adapter FOR: 350-352 Nose Assemblies on 200 TOOL: 200 HIT		REVISION:	9/19/01
104406		OTHER	
NOSE ASSEMBLY			





NOTES:

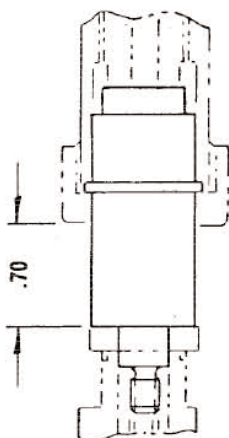
- 1 THIS ASSEMBLY TO BE USED TO ADAPT THE FOLLOWING.
 1) 353 STYLE NOSES WITH FIXED EARS AND FLATS TO THE 353 TOOL.
 THE ADAPTER MAKES IT POSSIBLE TO ORIENT THE FLATS.
 2) 353 STYLE NOSES WITH FULL RING ON ANVIL (NO EARS)
 TO THE 353 TOOL.
- 2 SLOTS TO BE LOCATED OVER EARS OF P/N 106798 RETAINER (ON NOSE ASSEMBLY) AND ORIENTED FACING THE TOOL AS SHOWN.

Alcoa Fastening Systems Commercial Products 1 Corporate Drive, Kingston, NY 12401		Part Number <div>104632</div>	
TYPE:	ROTATABLE ADAPTER ASSEMBLY	Notes:	Product Revision: F
FASTENER:	N/A	US Patent:	Date: 07/24/03
TOOL(S):	N/A		

Alcoa Fastening
Systems

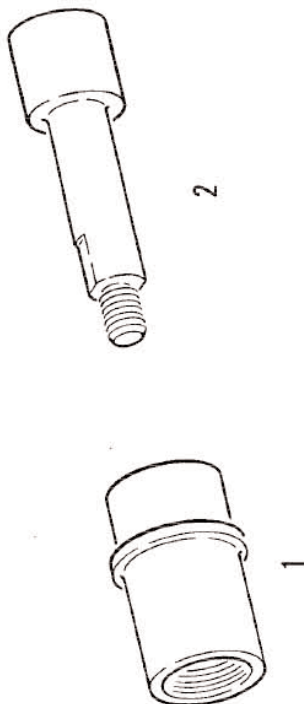


DATA SHEET



.70 in. = 18 mm

113272
Sheet 1 of 2



Nose Assemblies **** Tool Model**
99-1097; 99-1098; 99-1099 210; 211; 212; 223*
99-1100; 99-1101; 99-1102 230; 2400; 2702
*Europe only

Alcoa Fastening Systems Commercial Products 1 Corporate Drive - Kingston, NY 12401		TYPE: Offset Nose Assembly Adapter FOR: UNIMATIC B/R Offset N/A TOOL: **	
NOSE ASSEMBLY		Obscured By 123437	PRODUCT 11-83 REVISION: REVISED: 9/20/01

REPLACEMENT PARTS			
REF	PART NO.	REQ	DESCRIPTION
1	113136	1	Housing - Adapter
2	100535	1	Reducer - Spindle

SEE OTHER SIDE FOR NOTES AND ASSEMBLY INSTRUCTIONS

HOW TO ATTACH NOSE ASSEMBLY AND ADAPTER ASSEMBLY TO INSTALLATION TOOL

Inspect parts for wear and damage, and replace where required. Wash parts in mineral spirits or isopropyl alcohol only. Use a small pick to clean grooves in jaws. Part numbers on parts must match parts list numbers.

1. Disconnect tool from power source. Use Huck Installation Tool that has been properly prepared per applicable instruction Manual. Remove retaining nut; remove any shims from piston rod with small pick.
2. Screw Spindle Reducer (2) onto tool piston rod and tighten.
3. Slide Housing Adapter (1) over spindle reducer. Slide tool retaining nut over adapter. Do not screw retaining nut on tool.
4. Screw nose assembly housing locknut to back of threads. Hold front face of collet against inside face of anvil housing; screw assembled anvil housing and collet onto housing adapter and spindle reducer until snug - avoid over-tightening. Overtightening pushes piston rearward, thereby reducing tool stroke. See Figure 1 for proper housing adapter position. Position anvil housing and tighten housing locknut; tighten retaining nut.
5. Connect tool to power source. Install fastener in test plate of proper thickness with proper size holes. Inspect installed fastener.

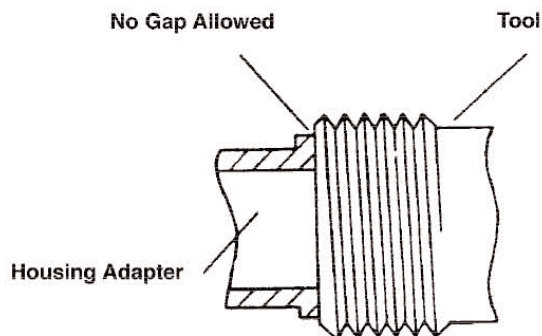
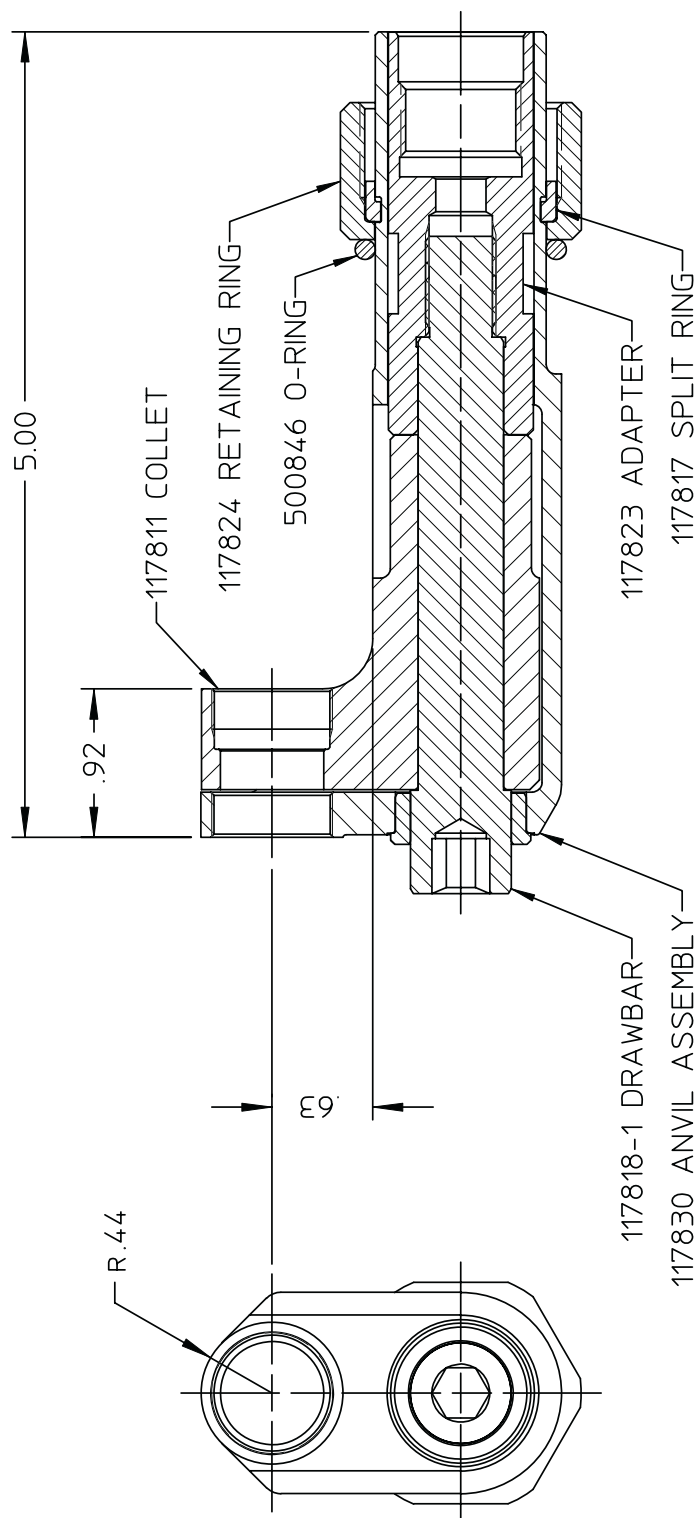


Figure 1

113272
Sheet 2 of 2

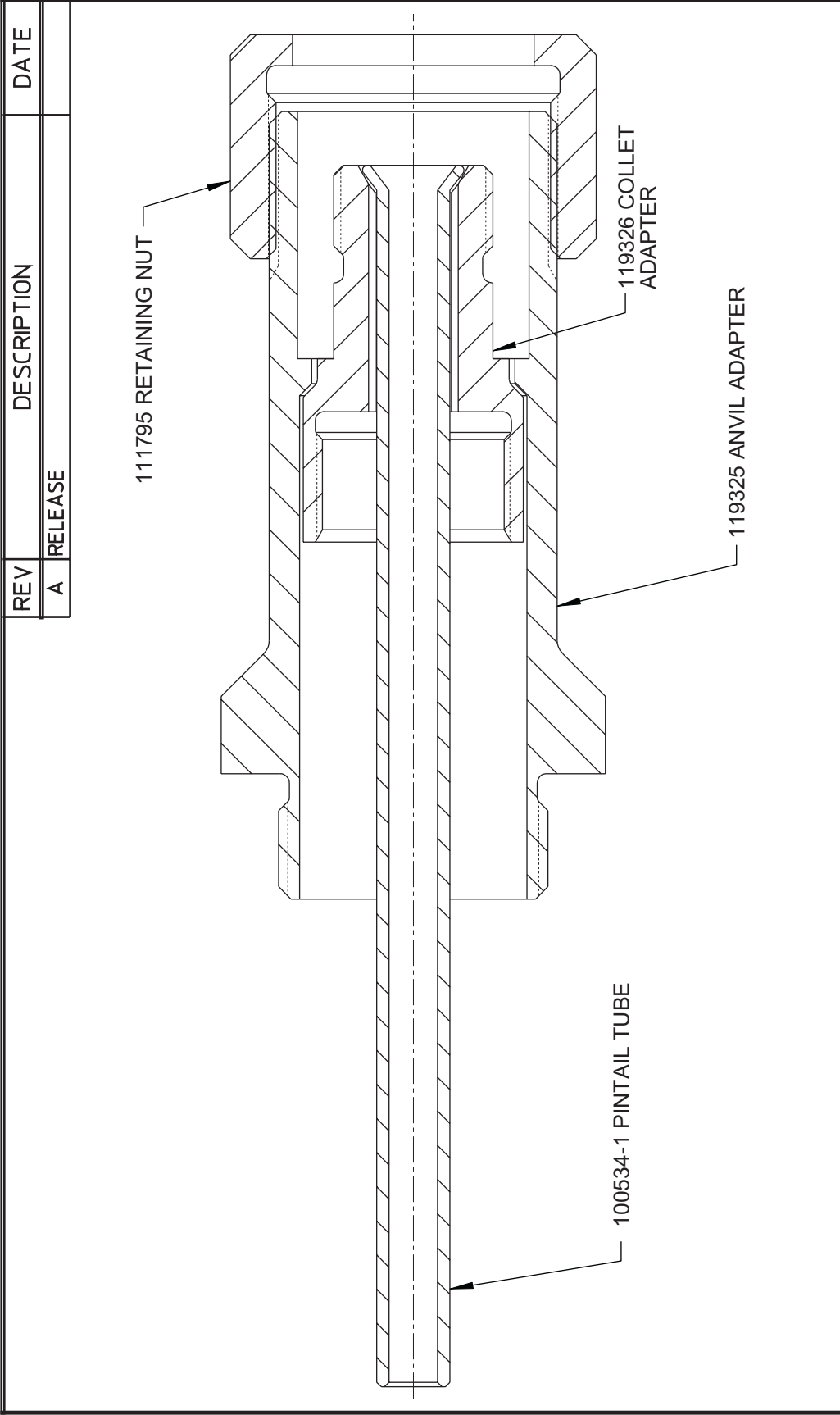


NOTES:

- 1 THIS ATTACHMENT TO BE USED WITH ALL 99-1500 SERIES NOSE ASSEMBLIES.
- 2 THIS ATTACHMENT TO BE USED WITH 225/245 TOOL AND STROKE LIMITER KIT P/N 118362.
- 3 THIS ATTACHMENT TO BE USED WITH 2500 TOOL AND STROKE LIMITER KIT P/N 119888.
- 4 FOR OTHER TOOLS AND/OR OTHER TOOL AND STROKE COMBINATIONS, CONSULT ENGINEERING DEPARTMENT.

Alcoa Fastening Systems Commercial Products 1 Corporate Drive, Kingston, NY 12401	
NOSE TYPE: ROTATABLE ATTACHMENT	
FASTENER TYPE: 99-1500 SERIES NOSE ASSEMS.	
TOOL(S): SEE NOTES	
Notes:	Product Revision: E
US Patent:	Date: 06/20/03
Part Number	
117831	

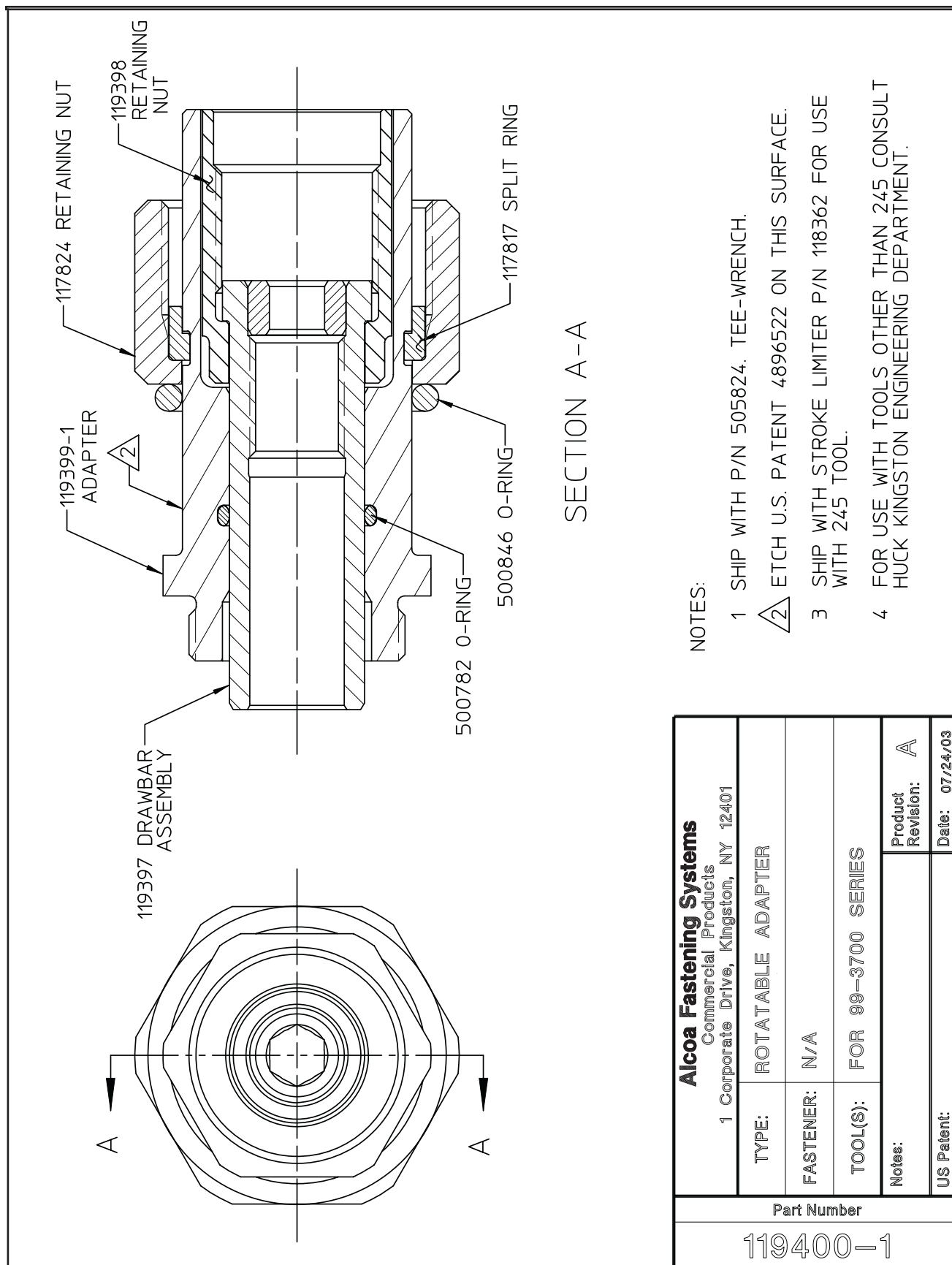
REV	DESCRIPTION	DATE
A	RELEASE	

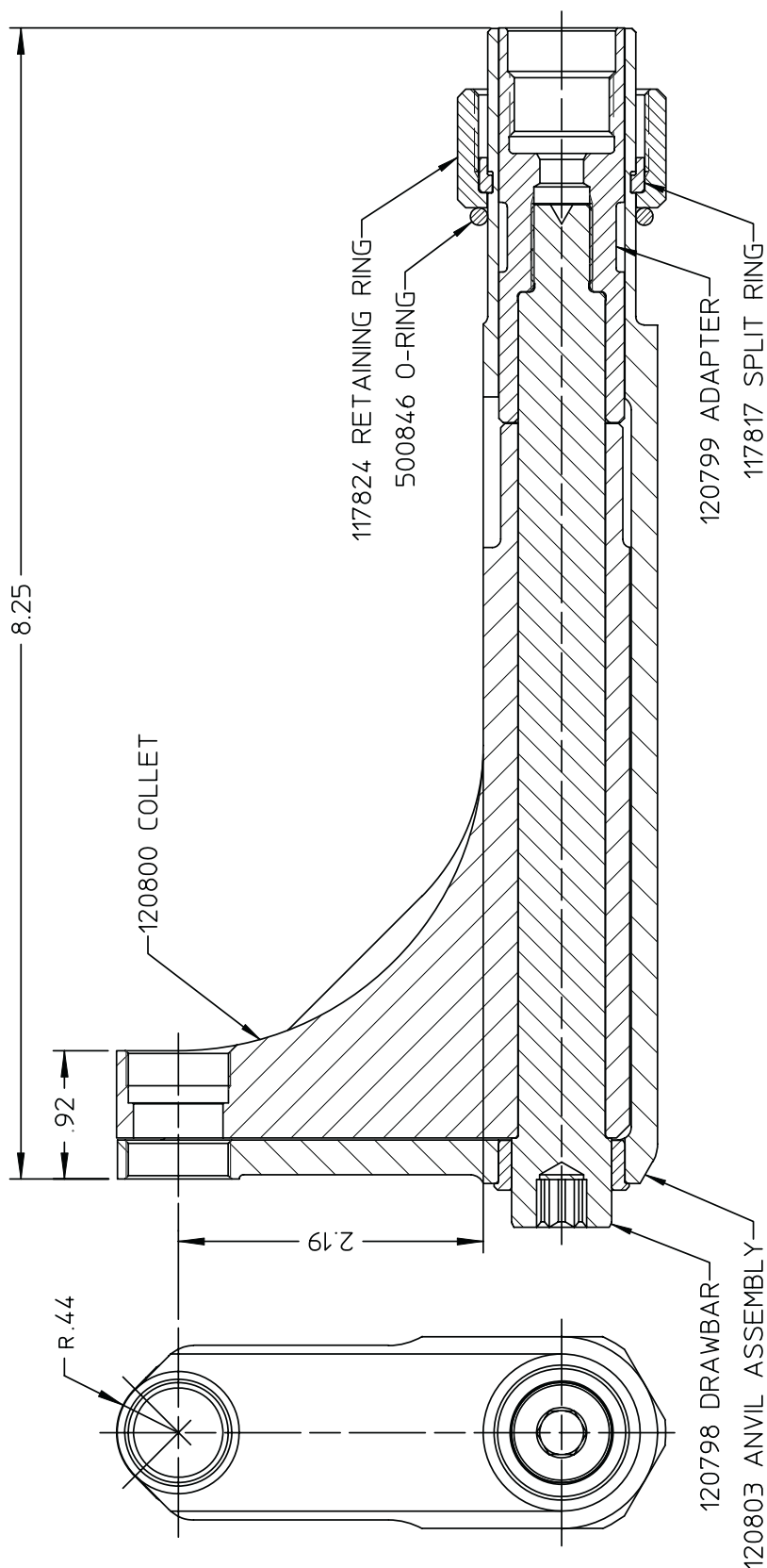


NOTES:

1 TO ADAPT 352 STYLE NOSES TO CHERRY MODEL G743 TOOL.

HUCK INTERNATIONAL, INC., I.S.D. 85 GRAND STREET, P.O. BOX 2270 KINGSTON, NEW YORK 12401	
ADAPTER ASSEMBLY MODEL G743 CHERRY TOOL	
DET: T.L. CK:	DATE: 04-14-94
FOC. FAC.	A 119327

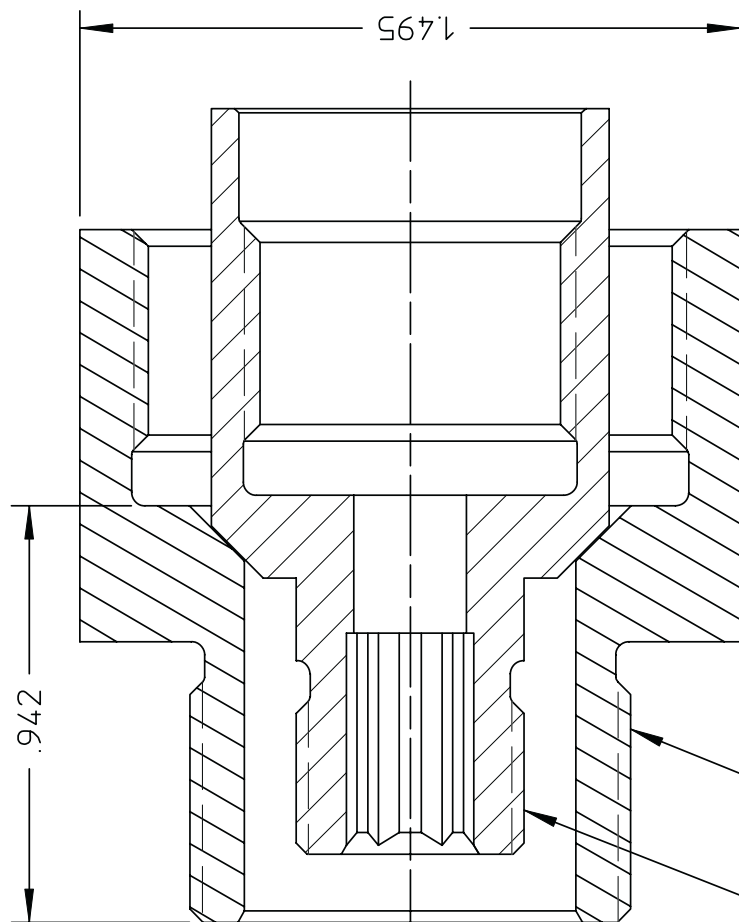




NOTES:

- 1 THIS ATTACHMENT TO BE USED WITH ALL 99-1500 SERIES NOSE ASSEMBLIES.
- 2 THIS ATTACHMENT TO BE USED WITH 225/245 TOOL AND STROKE LIMITER KIT P/N 118362.
- 3 THIS ATTACHMENT TO BE USED WITH 2500 TOOL AND STROKE LIMITER KIT P/N 119888.
- 4 FOR OTHER TOOLS AND/OR OTHER TOOL AND STROKE COMBINATIONS, CONSULT ENGINEERING DEPARTMENT.

Alcoa Fastening Systems Commercial Products 1 Corporate Drive, Kingston, NY 12401		Part Number	
NOSE TYPE: ROTATABLE OFFSET	FASTENER TYPE: 99-1500 SERIES NOSE ASSEMS.	120804	
TOOL(S): SEE NOTE	Notes:	Product Revision: B	US Patent:
		Date: 06/24/03	



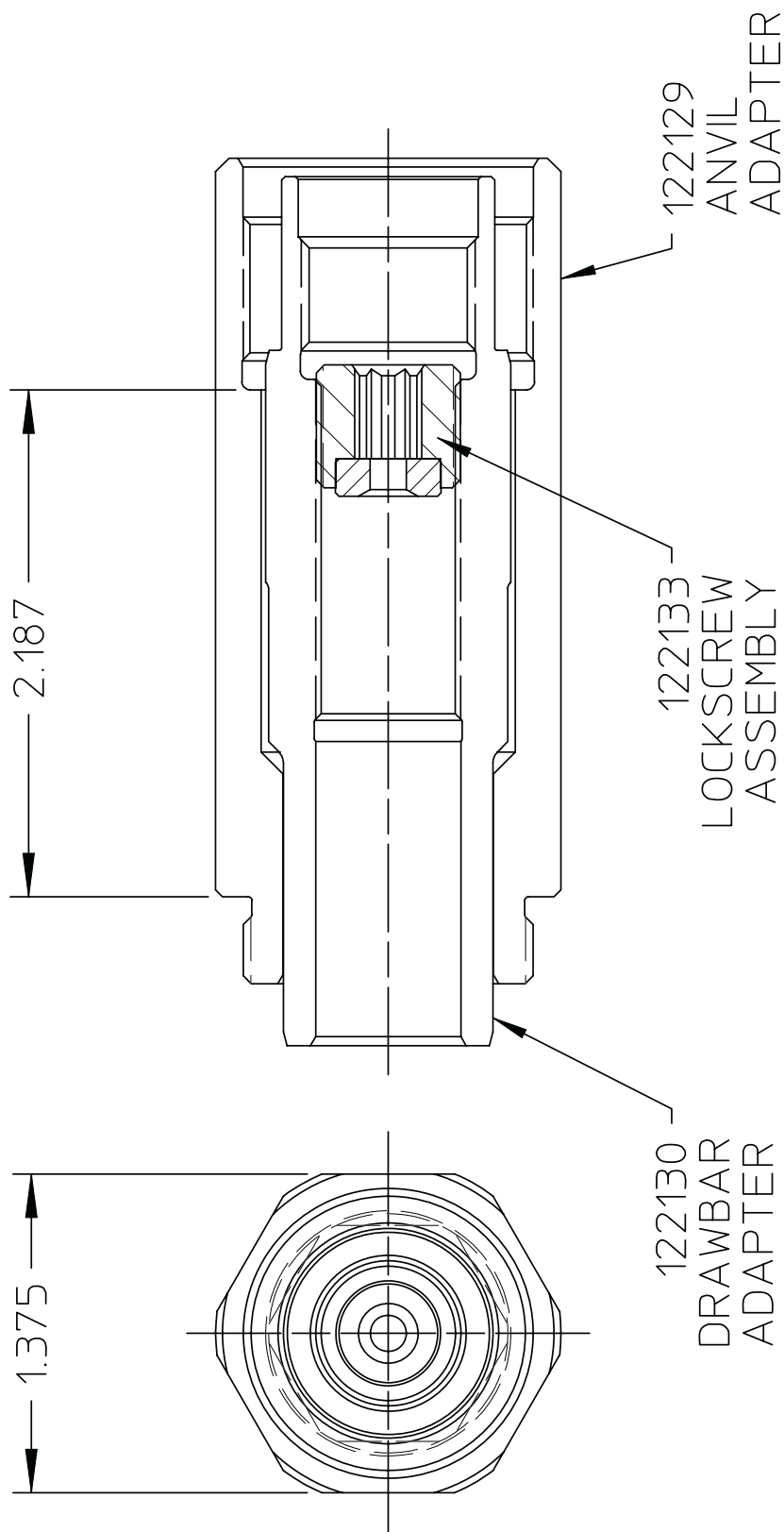
121393 INTERNAL ADAPTER

121394 EXTERNAL ADAPTER

NOTES:

- 1 TO ADAPT 99-3433 TO 245 STYLE TOOLS.
- 2 FOR REFERENCE ONLY:
TO ADAPT STANDARD 352 NOSE, USE WITH
103090 RETAINING NUT AND
110452 STOP

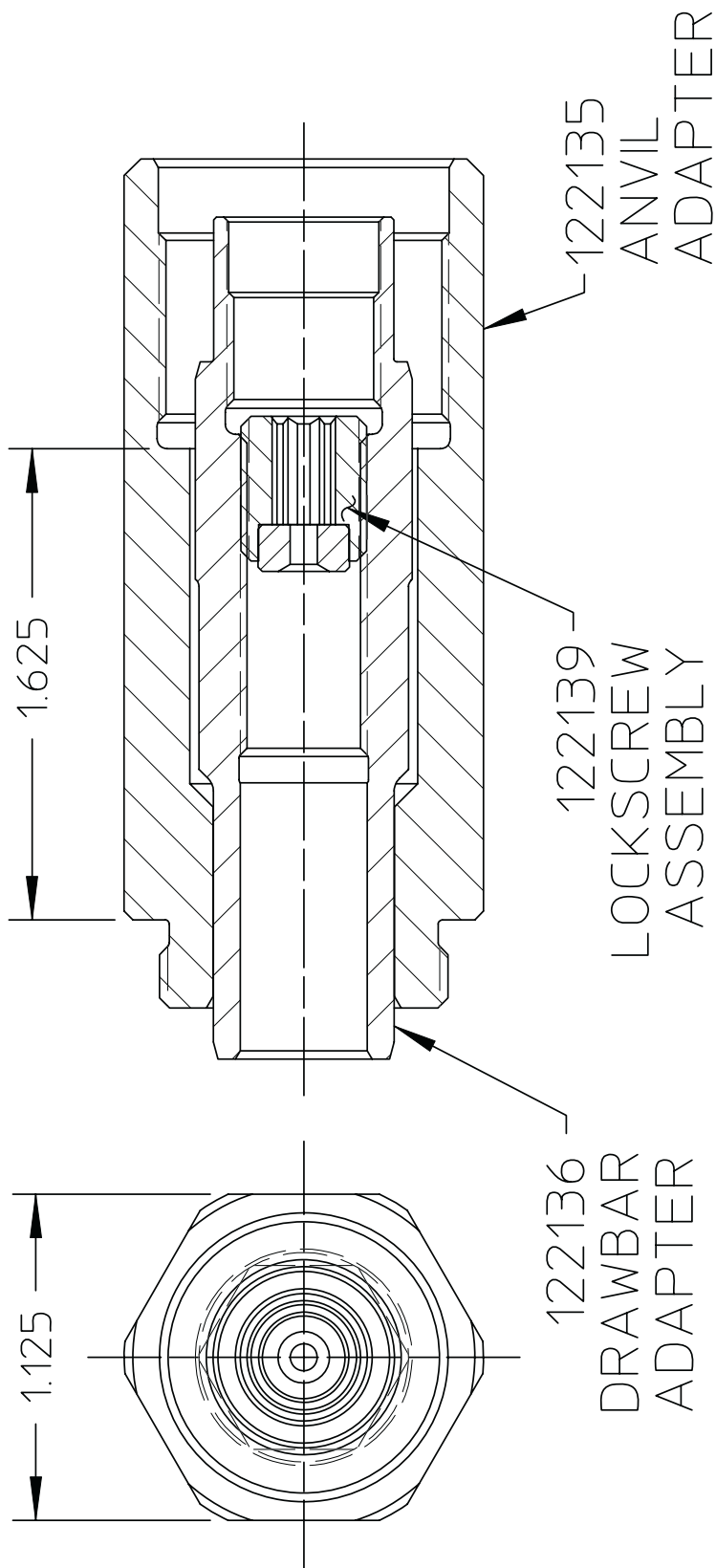
Alcoa Fastening Systems Commercial Products 1 Corporate Drive, Kingston, NY 12401			
TYPE:	ADAPTER ASSEMBLY		
FASTENER:	N/A		
TOOL(S):	ADAPTS 230 TO 245		
Notes:		Product Revision: B	Date: 07/24/03
US Patent:			
Part Number			
121395			



NOTES:

1 SHIP WITH TEE-WRENCH P/N 505824.

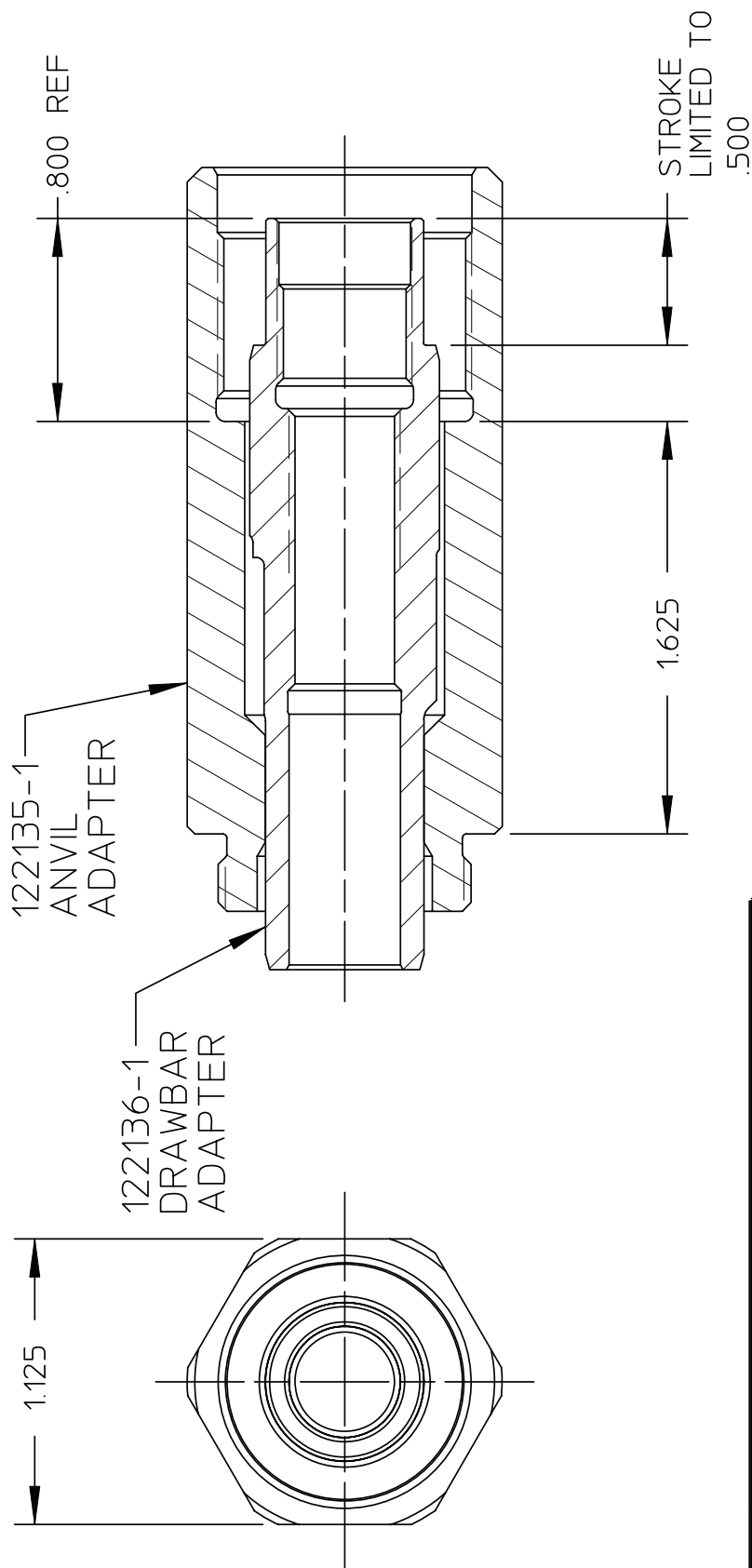
Alcoa Fastening Systems Commercial Products 1 Corporate Drive, Kingston, NY 12401			
NOSE TYPE:	ROTATABLE ADAPTER		
FASTENER TYPE:	99-1700/208-625 SERIES		
TOOL(S):	225, 245		
Notes:		Product Revision:	A
US Patent:		Date:	06/20/03
Part Number			
122134			



NOTES:

1 SHIP WITH TEE-WRENCH P/N 506116.

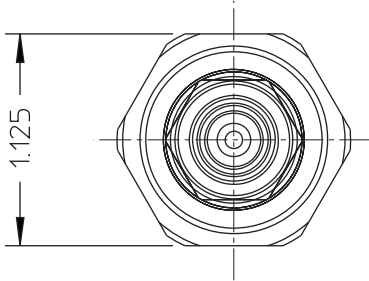
Alcoa Fastening Systems Commercial Products 1 Corporate Drive, Kingston, NY 12401		Part Number 122140	
TYPE:	ROTATABLE ADAPTER	FASTENER:	N/A
TOOL(S):	99-1700/208-625 SERIES	Notes:	
		Product Revision:	A
US Patent:		Date:	07/24/03



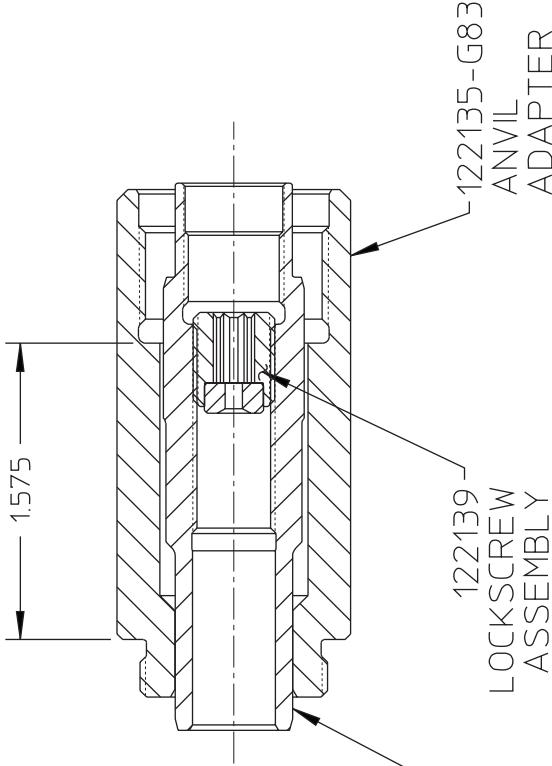
Alcoa Fastening Systems Commercial Products 1 Corporate Drive, Kingston, NY 12401			
TYPE:	ADAPTER		
FASTENER:	N/A		
TOOL(S):	FOR 99-3700 STYLE & 230 TOOL		
Notes:			Product Revision: A
US Patent:			Date: 07/24/03
Part Number			
122140-1			

REV	DESCRIPTION	DATE
A	RELEASE	12/18/01

1.125



1.575



122136
DRAWBAR
ADAPTER

122139
LOCKSCREW
ASSEMBLY

122135-G83
ANVIL
ADAPTER

HUCK MANUFACTURING COMPANY I.E.D.
85 GRAND STREET, P.O. BOX 2270
KINGSTON, NEW YORK 12401

ADAPTER

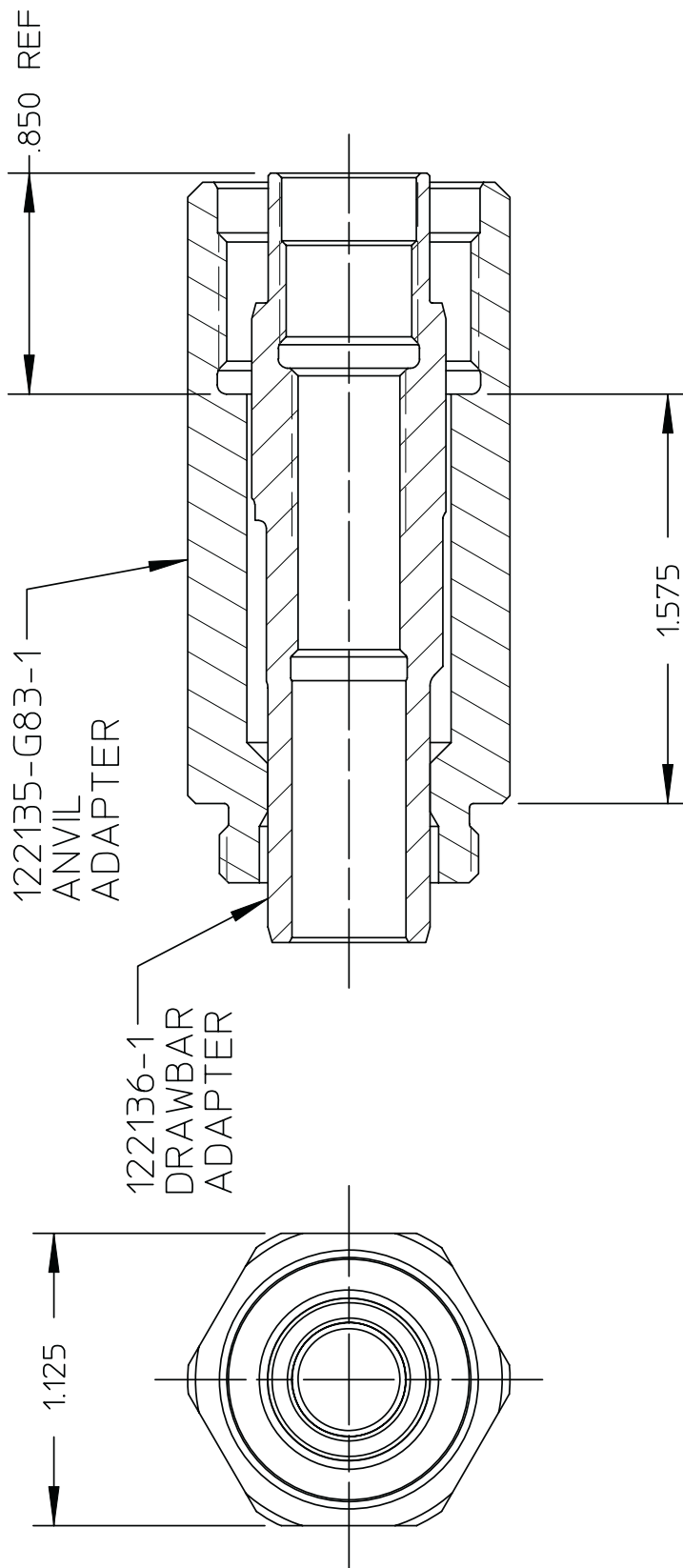
99-1700 STYLE & CHERRY G83

DET: WV CK: - DATE: 12/18/01

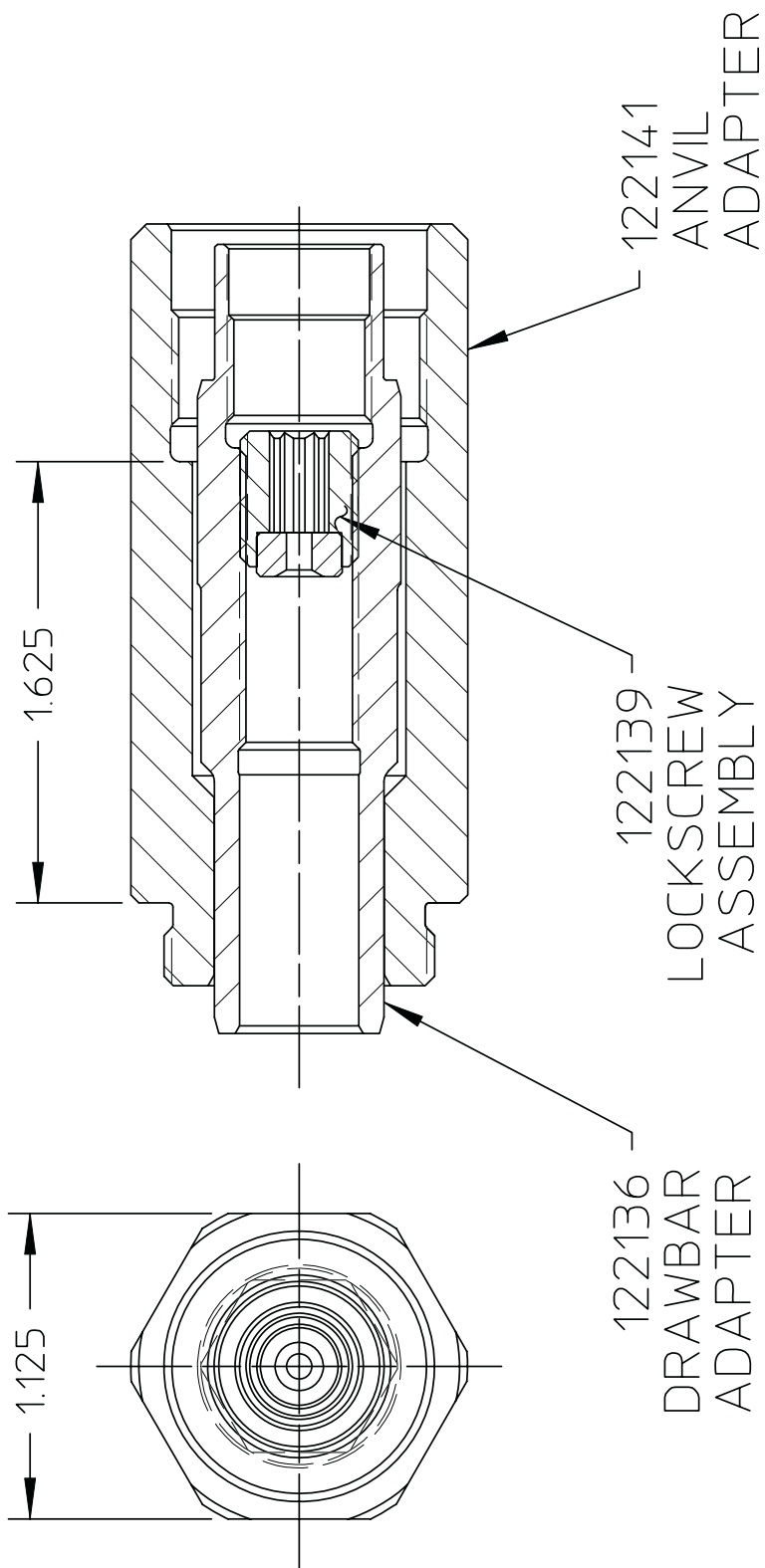
FOC: FAC: A 122140-G83

NOTES:

1 SHIP WITH TEE-WRENCH P/N 506116.



Alcoa Fastening Systems Commercial Products 1 Corporate Drive, Kingston, NY 12401			
TYPE:	ADAPTER		
FASTENER:	N/A		
TOOL(S):	FOR 99-3700 STYLE & CHERRY G83		
Notes:		Product Revision:	A
US Patent:			Date: 07/24/03
Part Number			
122140-G83-1			



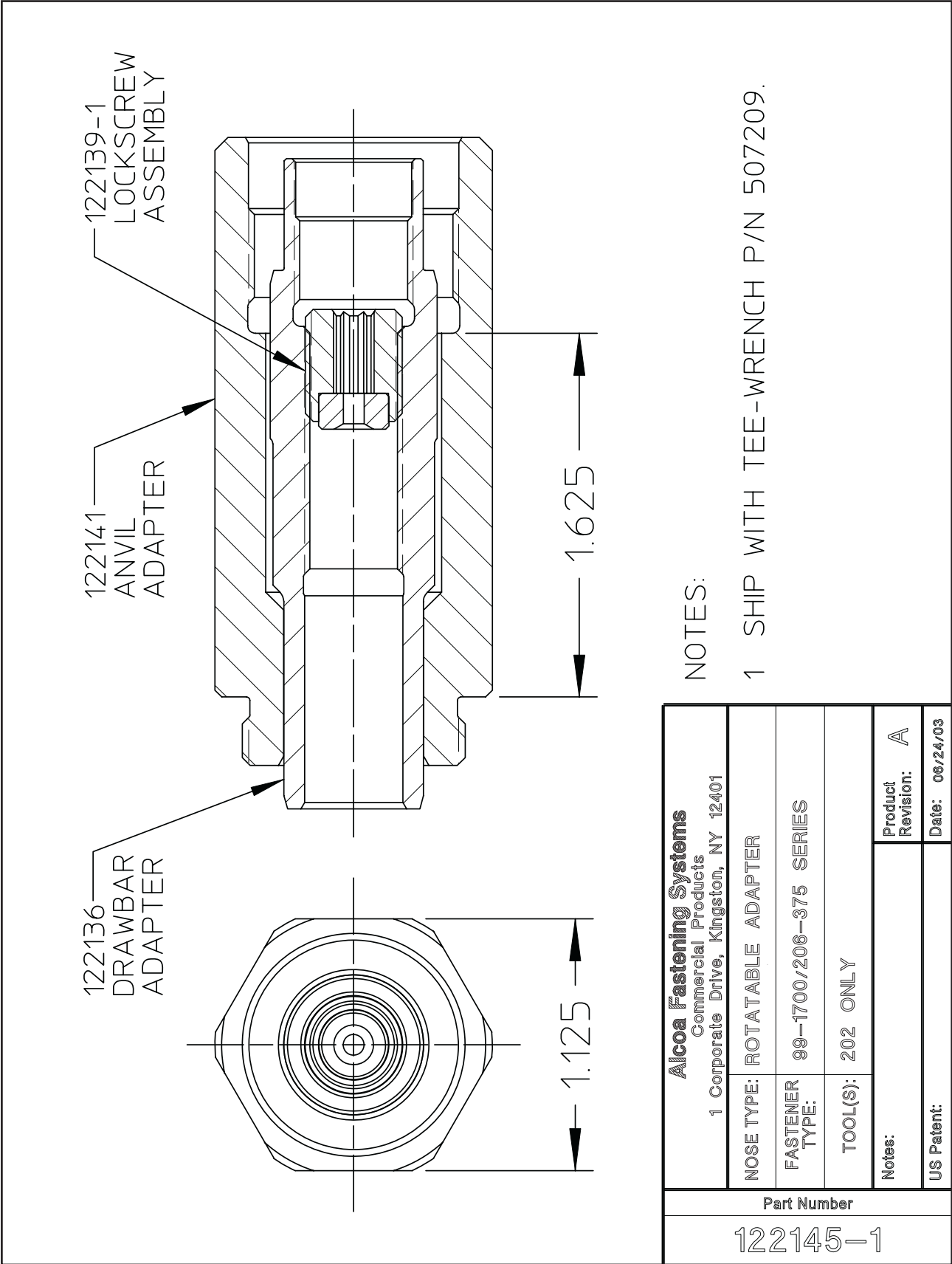
NOTES:

1 SHIP WITH TEE-WRENCH P/N 506116.

Alcoa Fastening Systems Commercial Products 1 Corporate Drive, Kingston, NY 12401	
TYPE:	ROTATABLE ADAPTER-OFFSET
FASTENER:	99-1700/206-375 SERIES
TOOL(S):	2400 ONLY
Notes:	Product Revision: A
US Patent:	Date: 07/18/03
Part Number	
122145	

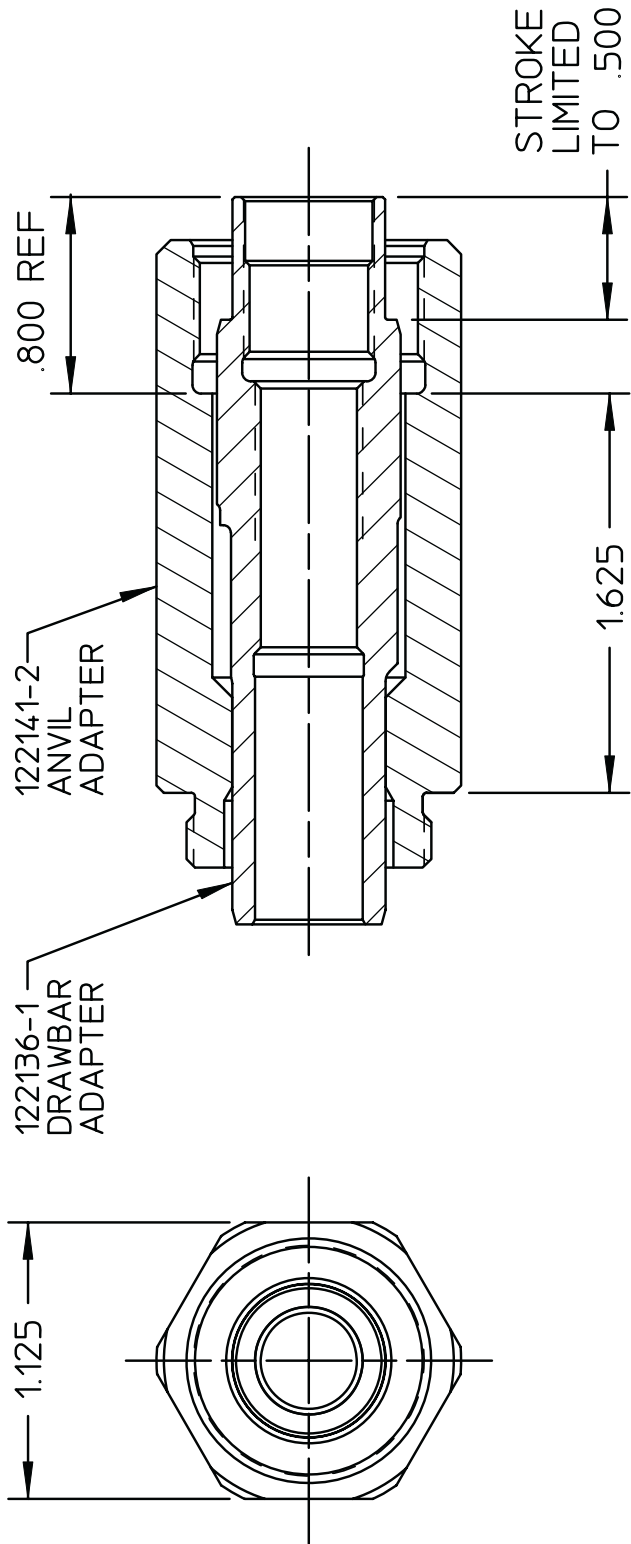


NOSE ADAPTER MATRIX AND DRAWINGS
(CONTINUED)





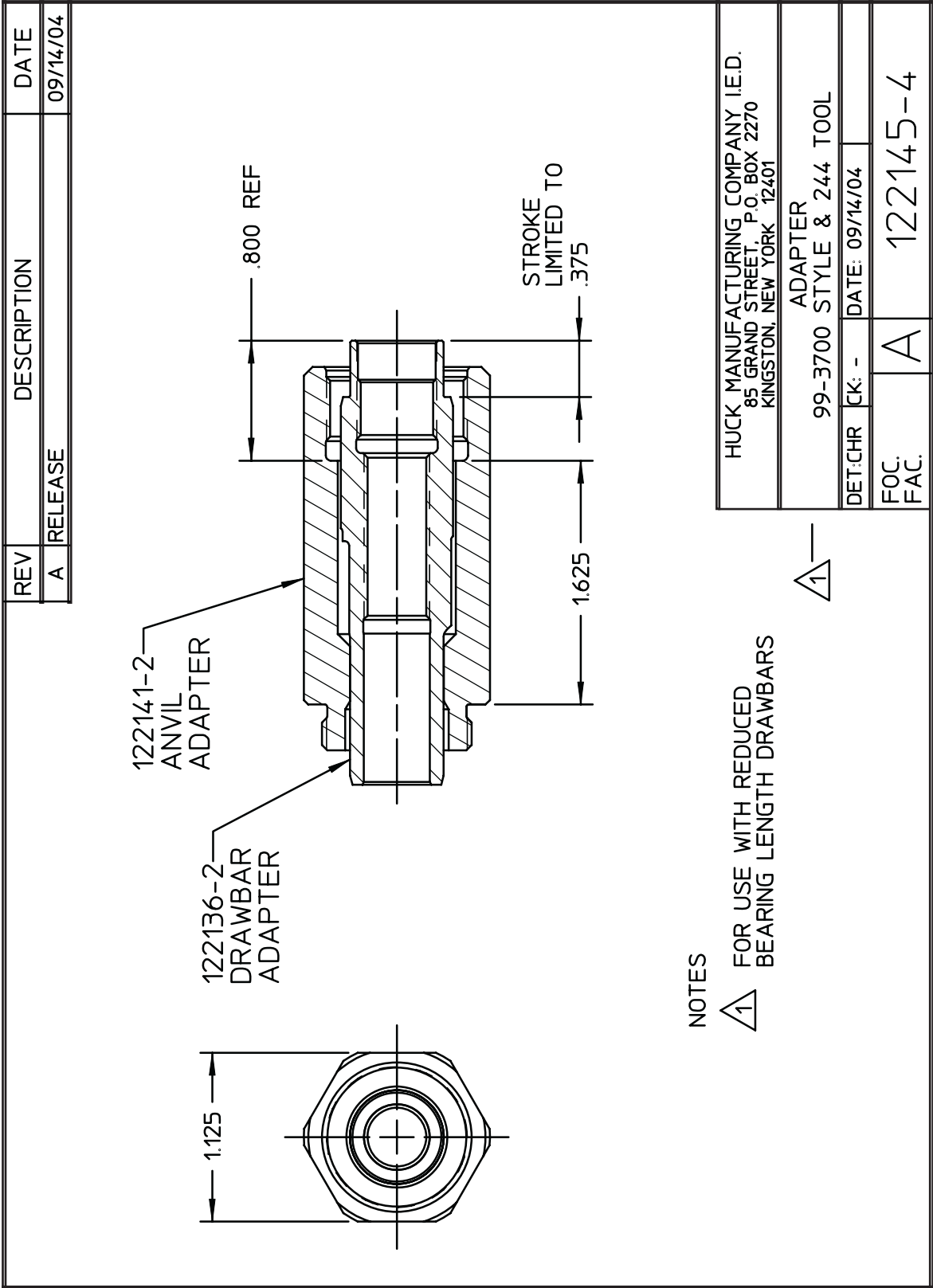
NOSE ADAPTER MATRIX AND DRAWINGS
(CONTINUED)



Alcoa Fastening Systems Commercial Products 1 Corporate Drive, Kingston, NY 12401			
TYPE:	ADAPTER		
FASTENER:	N/A		
TOOL(S):	FOR THE 99-3700 & 2480 TOOL		
Notes:			Product Revision: A
US Patent:			Date: 02/26/04
Part Number			
122145-3			

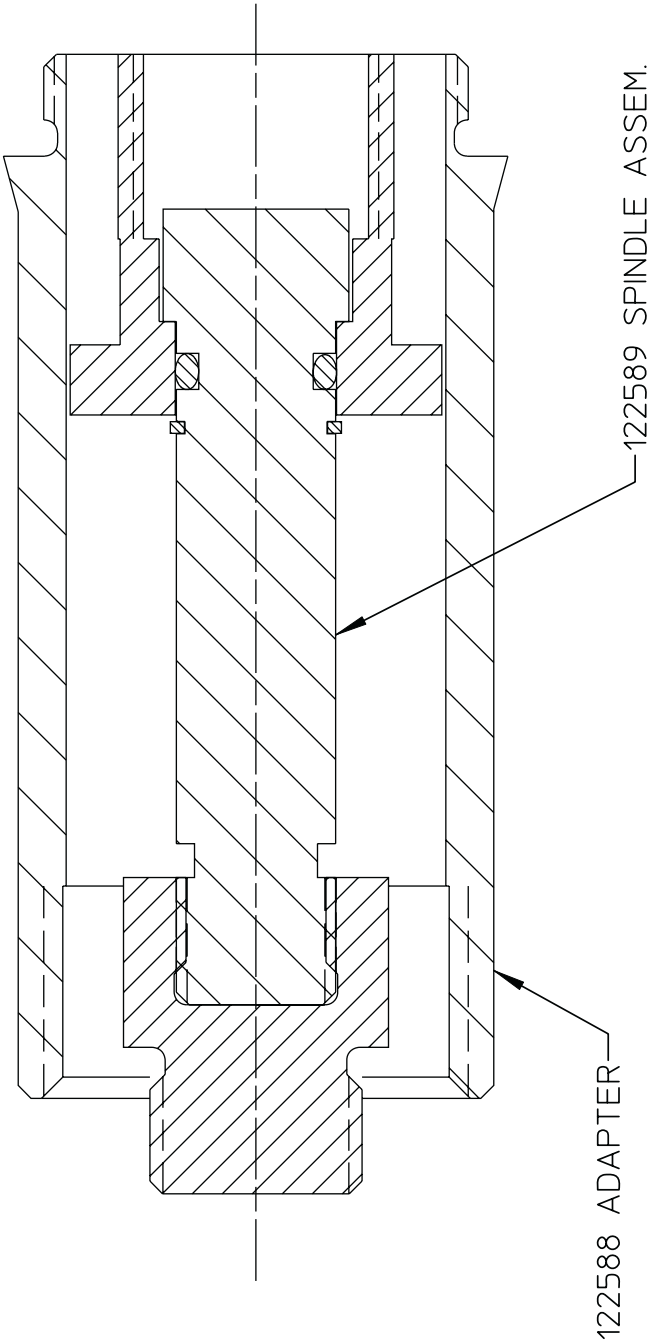


NOSE ADAPTER MATRIX AND DRAWINGS
(CONTINUED)





NOSE ADAPTER MATRIX AND DRAWINGS
(CONTINUED)



NOTES:

- 1 ADAPTS 99-S456 TO AN HK150

Alcoa Fastening Systems Commercial Products 1 Corporate Drive, Kingston, NY 12401					
TYPE:	NON-SELF-RELEASING				
FASTENER:	N/A				
TOOL(S):	ADAPTS 99-S456 TO HK150				
Notes:			Product Revision: C		
US Patent:			Date: 07/24/03		
Part Number					
122587					



NOSE ADAPTER MATRIX AND DRAWINGS
(CONTINUED)

REV	DESCRIPTION	DATE
B	DRAWN IN CAD, FORMERLY NSD.	05/03/01

103527
ADAPTER
SPINDLE

122924
ADAPTER

NOTES:

1 ADAPTS 99A, 99-1100, AND OLYMPIC SERIES NOSES
TO THE 194 AND 227 INSTALLATION TOOLS.

HUCK INTERNATIONAL, INC., I.S.D.
1 CORPORATE DRIVE, P.O. BOX 2270
KINGSTON, NEW YORK 12401

KIT
ADAPTER

DET: WV CK: - DATE: 05/03/01

FOC. A 122921
FAC.



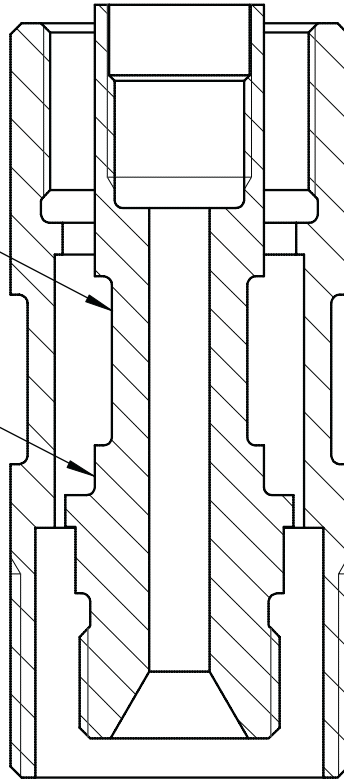
NOSE ADAPTER MATRIX AND DRAWINGS

(CONTINUED)

REV	DESCRIPTION	DATE
A	RELEASE	11-11-92
B	CORRECTED CALLOUTS. NUMBERS WERE REVERSED.	11-24-98

123063 SPINDLE ADAPTER

123064 ANVIL ADAPTER



HUCK INTERNATIONAL, INC., I.S.D.
1 CORPORATE DRIVE, P.O. BOX 2270
KINGSTON, NEW YORK 12401

ADAPTER ASSEMBLY
353 TO 230

DET: T. L. CK: DATE: 11-11-92 SCALE:

FOC. FAC. A 123065

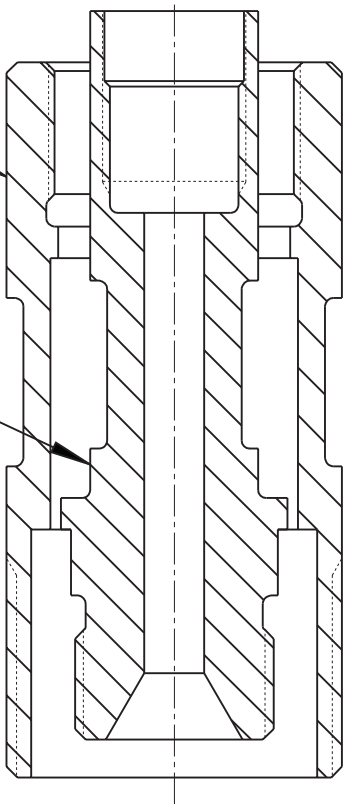


NOSE ADAPTER MATRIX AND DRAWINGS
(CONTINUED)

REV	DESCRIPTION	DATE
A	RELEASE	10-27-00

123063 SPINDLE ADAPTOR

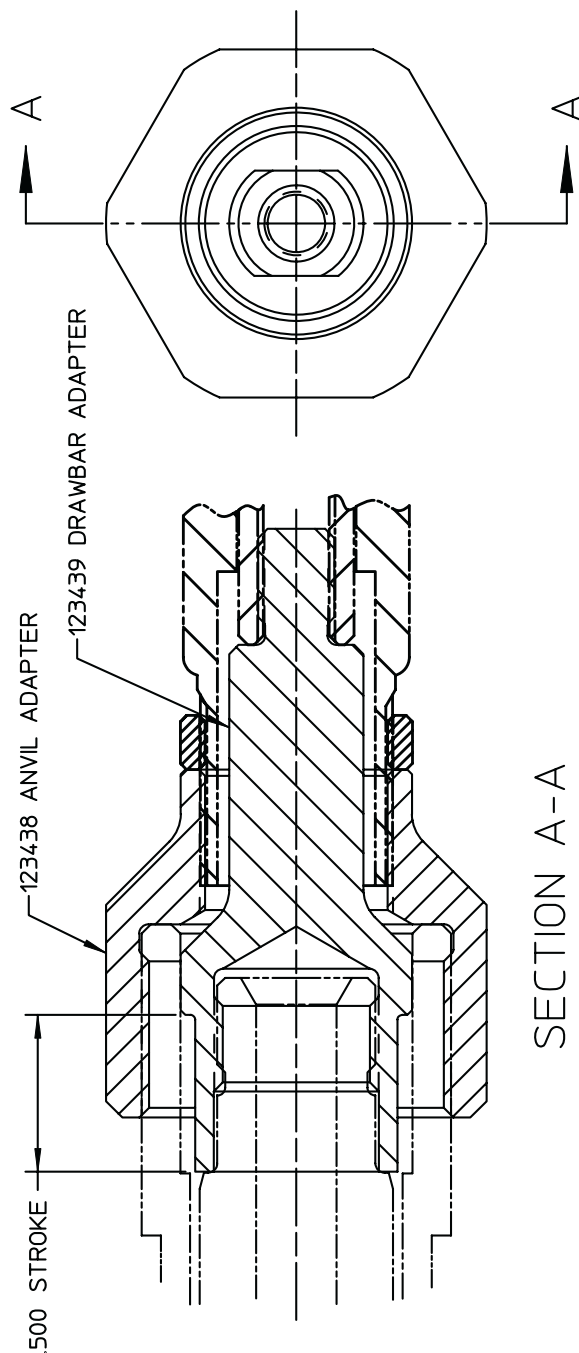
123064-1 ANVIL ADAPTOR



HUCK INTERNATIONAL, INC., I.S.D. 1 CORPORATE DRIVE, P.O. BOX 2270 KINGSTON, NEW YORK 12401			
ADAPTER ASSEMBLY 353 TO 244			
DET: MP	CK:	DATE: 10-26-00	
FOC:	A	123065-1	
FAC:			



NOSE ADAPTER MATRIX AND DRAWINGS
(CONTINUED)



SECTION A-A

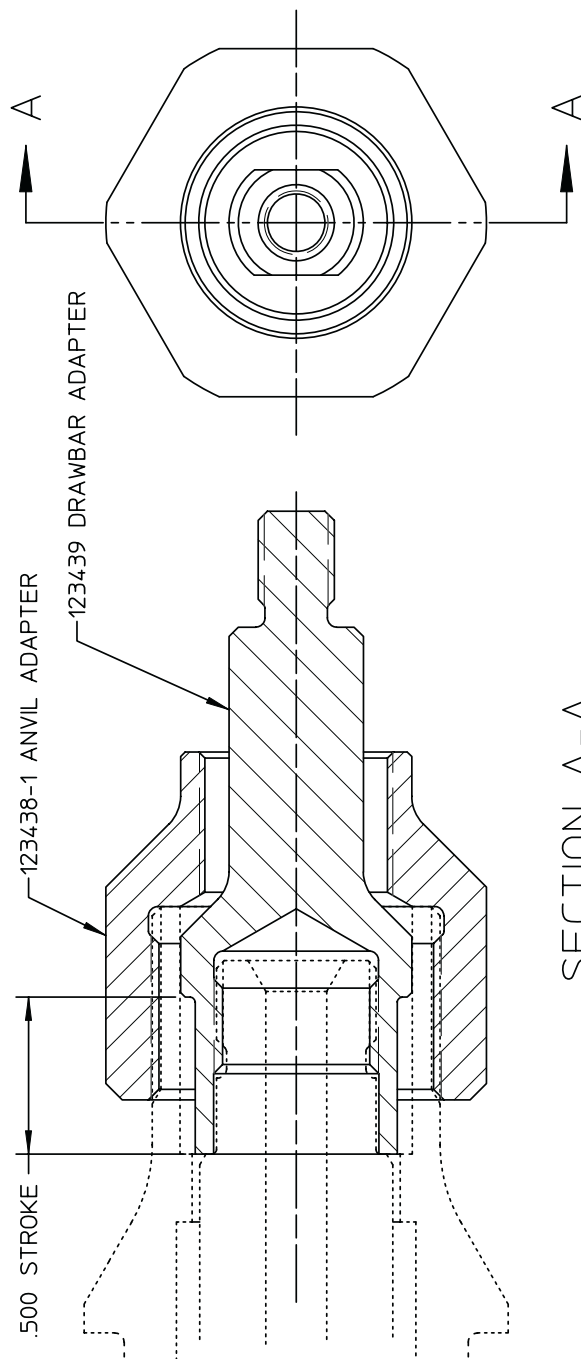
NOTES:

- 1 USE TO ADAPT 99-1099, -1098, -1097, -1100, -1101 AND -1102 TO 230 TOOL.

Alcoa Fastening Systems Commercial Products 1 Corporate Drive, Kingston, NY 12401		Part Number	
TYPE:	ADAPTER ASSEMBLY	123437	
FASTENER:	N/A		
TOOL(S):	N/A		
Notes:		Product Revision:	C
US Patent:		Date:	07/24/03



NOSE ADAPTER MATRIX AND DRAWINGS
(CONTINUED)

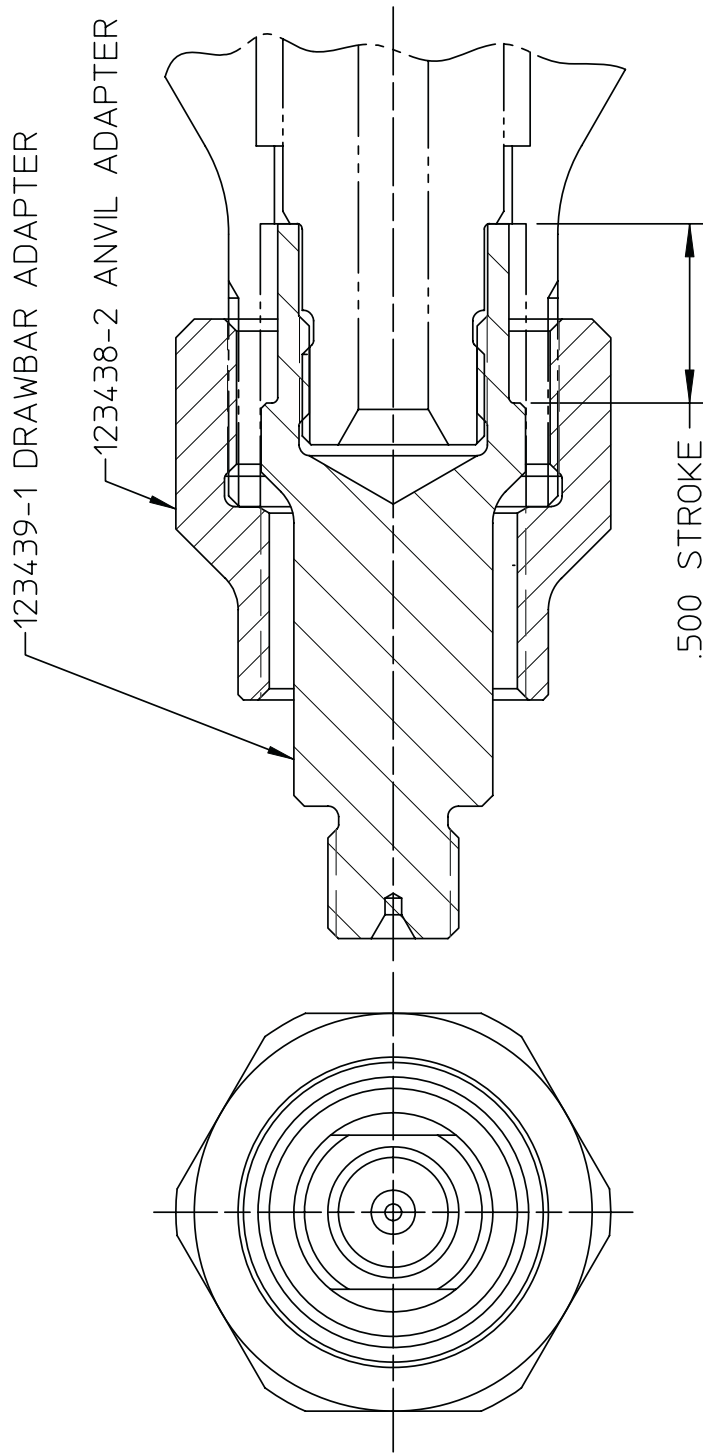


SECTION A-A

NOTES:

- 1 USE TO ADAPT 99-1097, -1098, -1099, -1100, -1101 AND -1102 TO 202 TOOL.

Alcoa Fastening Systems Commercial Products 1 Corporate Drive, Kingston, NY 12401					Product Revision: C	Date: 07/24/03	
TYPE:		ADAPTER ASSEMBLY					
FASTENER:		N/A					
TOOL(S):		N/A					
Notes:						US Patent:	
Part Number							
123437-1							



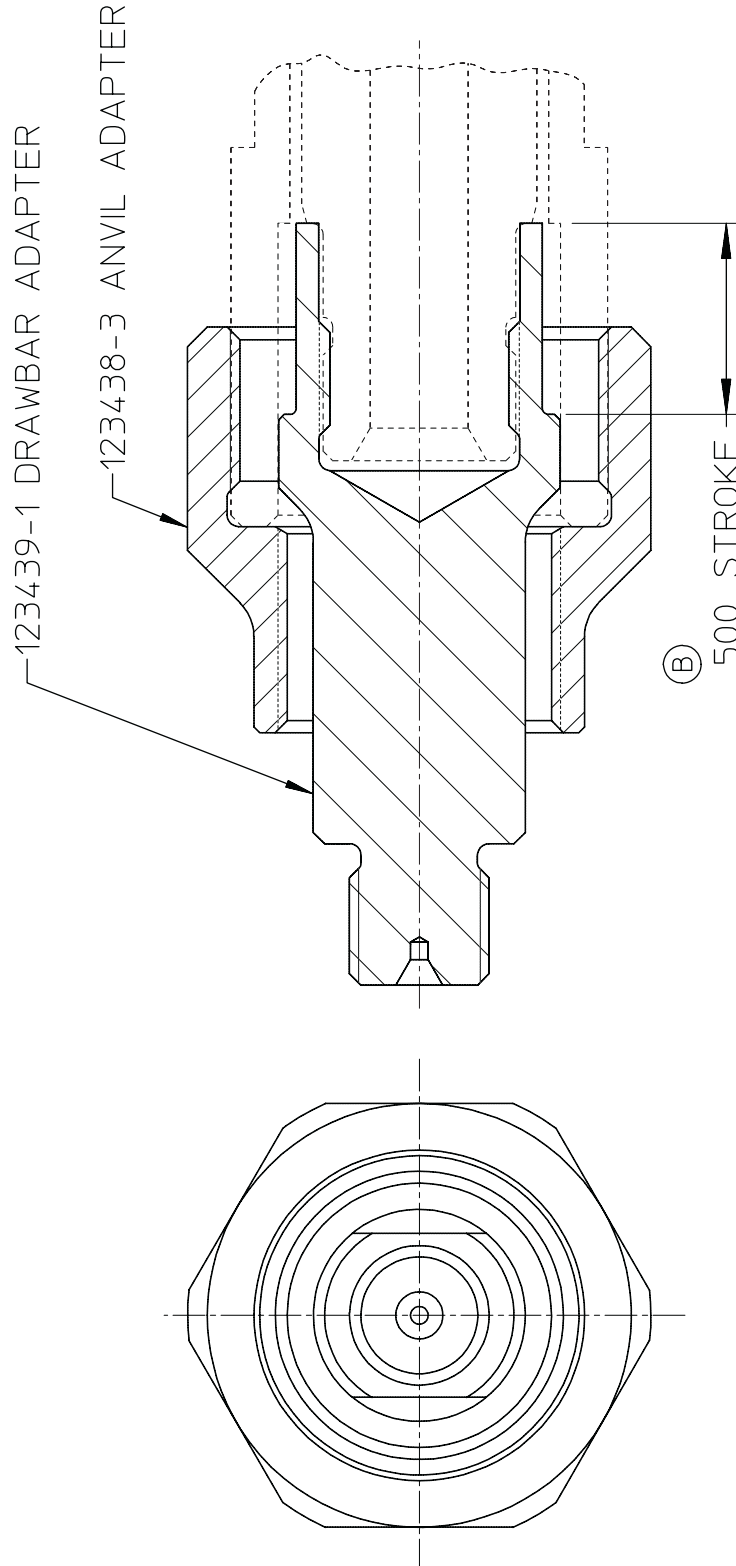
NOTES:

△ USE TO ADAPT 99-1333, 99-1335 AND 99-1336 TO 202 TOOL.

Alcoa Fastening Systems Commercial Products 1 Corporate Drive, Kingston, NY 12401			
TYPE:	ADAPTER ASSEMBLY		
FASTENER:	N/A		
TOOL(S):	N/A		
Notes:		Product Revision:	B
US Patent:			Date: 07/24/03
Part Number			
123437-2			

NOSE ADAPTER MATRIX AND DRAWINGS **(CONTINUED)**

REV	DESCRIPTION	DATE
A	RELEASE	08/03/95
B	.500 STROKE WAS .437	07/17/02



NOTES:

- △ USE TO ADAPT 99-1333, 99-1335 AND 99-1336 TO 230 TOOL.

HUCK INTERNATIONAL, INC., I.S.D.
 85 GRAND STREET, P.O. BOX 2270
 KINGSTON, NEW YORK 12401

ADAPTER ASSEMBLY

DET: T.L. CK: DATE: 08-03-95

FOC: A 123437-3
 FAC:

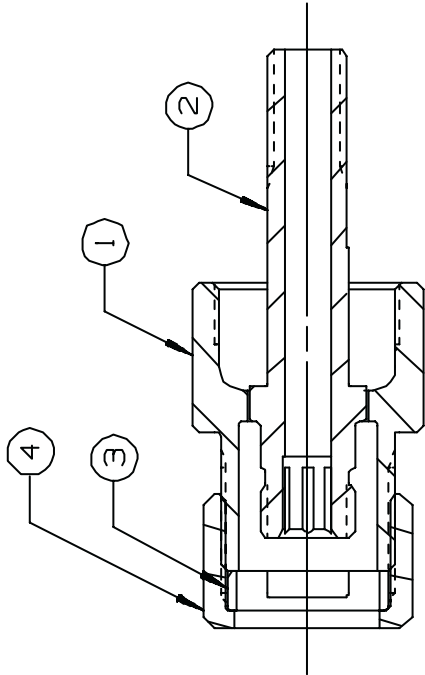


NOSE ADAPTER MATRIX AND DRAWINGS
(CONTINUED)

REV	DESCRIPTION	DATE
D	MODELED IN UG	05/21/04

NOTES:

- 1 TO BE USED WITH 206-375 OR 206-625
AND 3/16 PASS THRU 352 STYLE NOSES.



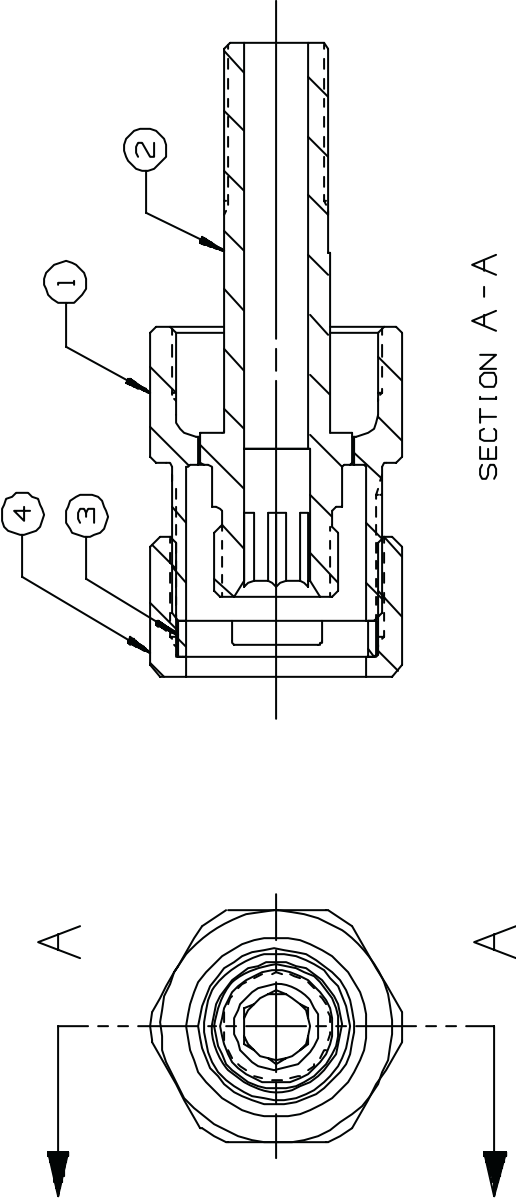
SECTION A - A

PART NO	QTY	DESCRIPTION	ITEM
111795	1	RETAINING NUT	4
120588	1	ROTATABLE STOP	3
126679	1	COLLET ADAPTER	2
124111	1	ANVIL ADAPTER	1

HUCK INTERNATIONAL, INC. ^g I.S.D. 1 CORPORATE DR., P.O. BOX 2270 KINGSTON, NEW YORK 12401	
ADAPTER ASSEMBLY	
DET: WV	DATE: 04/11/94
FOC: A	124113
FAC:	

By accepting this proprietary Huck drawing, recipient agrees not to reproduce or disclose
any part thereof to any other without the written permission of Huck International, Inc.

REV	DESCRIPTION	DATE
A	RELEASE	05/21/04



SECTION A - A

PART NO	QTY	DESCRIPTION	ITEM
117824	1	RETAINING NUT	4
110670	1	ROTATABLE STOP	3
126679-1	1	COLLET ADAPTER	2
124111-1	1	ANVIL ADAPTER	1

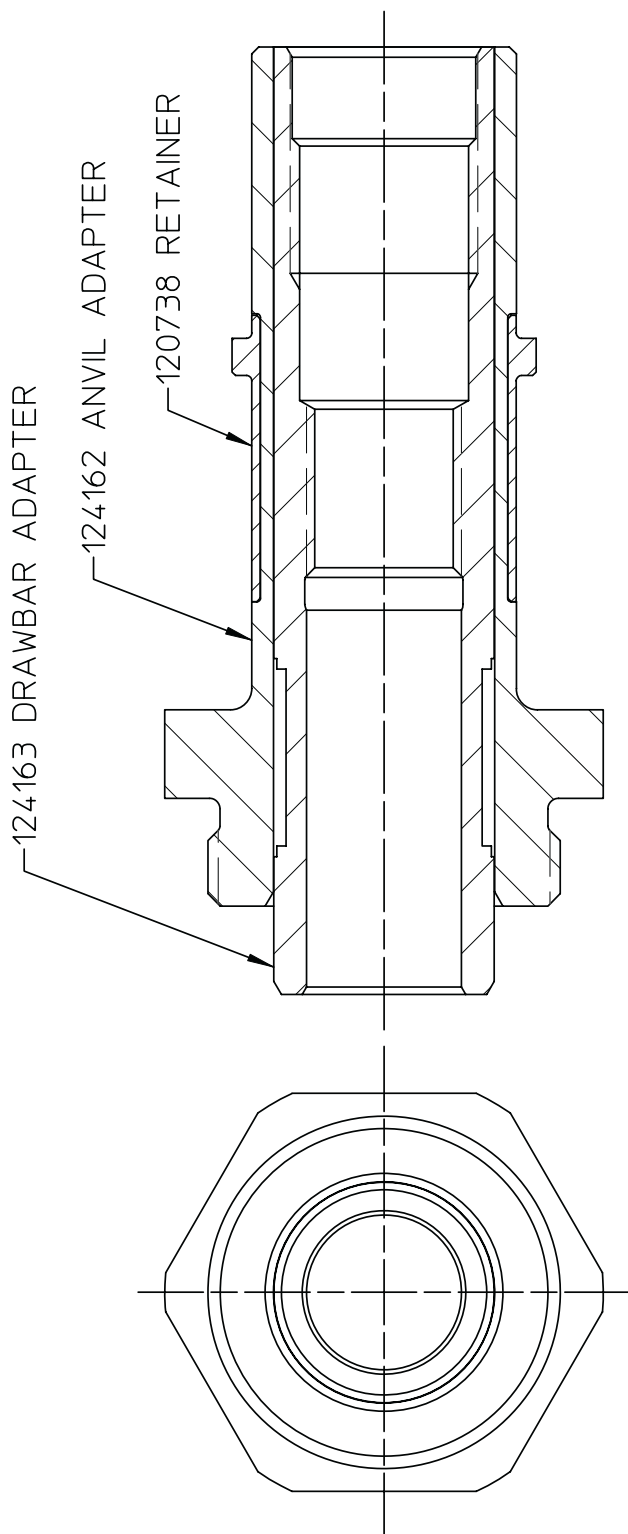
HUCK INTERNATIONAL, INC., J.S.D.
 1 CORPORATE DR., P.O. BOX 2270
 KINGSTON, NEW YORK 12401

ADAPTER ASSEMBLY
 FOR 208-625

DATE: 05/21/04
 FOC: FAC:

124113-1

NOTES:
 1 TO BE USED WITH 208-625 OR 208-437R1
 AND 3/8 PASS THRU 353 STYLE NOSES.



NOTES:

- 1 FOR USE WITH 244 TOOL SHIP WITH RETAINING NUT 125412.

Alcoa Fastening Systems Commercial Products 1 Corporate Drive, Kingston, NY 12401		Part Number 124164	
TYPE:	ADAPTER ASSEMBLY	Notes:	Product Revision: B
FASTENER:	N/A	US Patent:	Date: 07/24/03
TOOL(S):	99-1700 SERIES TO 352		

REV	DESCRIPTION	DATE
A	RELEASE	01-26-96

117824 RETAINING NUT

110670 STOP

124975 COLLET
ADAPTER ASSEMBLY

124976 ANVIL ADAPTER

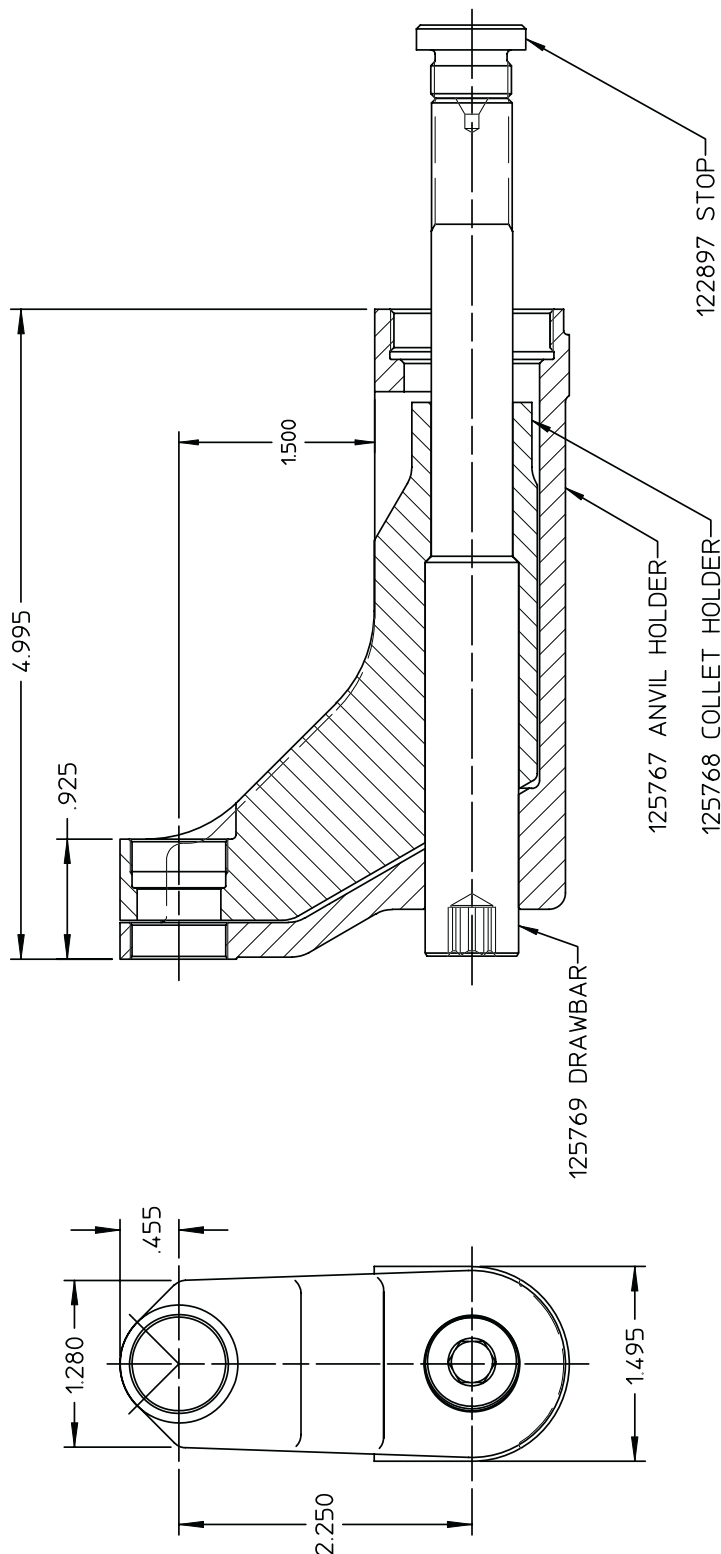
HUCK INTERNATIONAL, INC., I.S.D.
85 GRAND STREET, P.O. BOX 2270
KINGSTON, NEW YORK 12401

ADAPTER ASSEMBLY
353 TO 5901

DET: T.L. CK: DATE: 01-26-96

FOC: A 124977

FAC:



Alcoa Fastening Systems Commercial Products 1 Corporate Drive, Kingston, NY 12401			
TYPE:	OFFSET ATTACHMENT		
FASTENER:	N/A		
TOOL(S):	208-625		
Notes:		Product Revision:	C
US Patent:			Date: 07/23/03
Part Number			
125770			

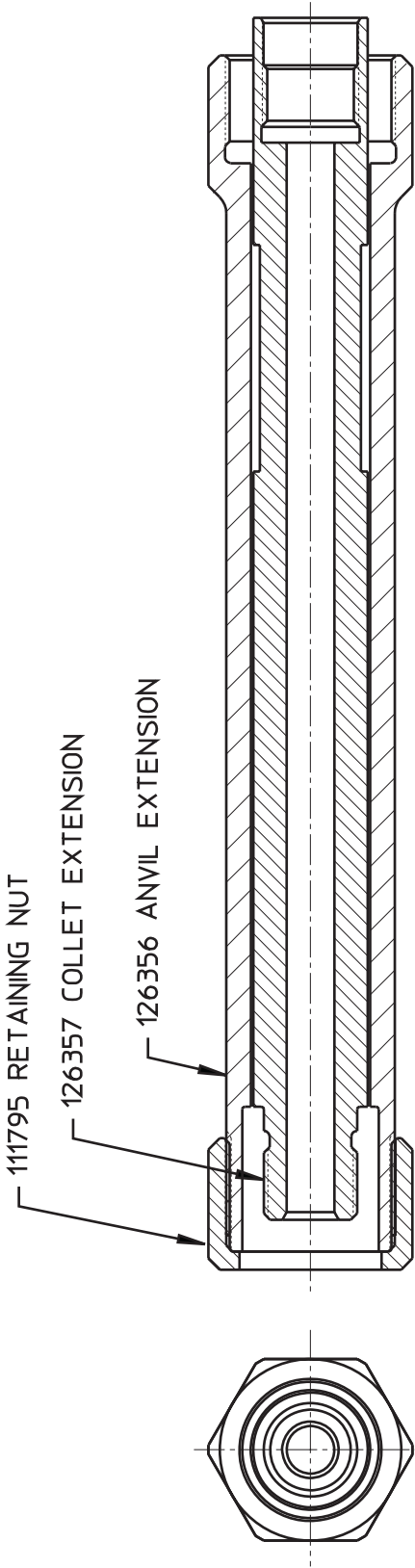


NOSE ADAPTER MATRIX AND DRAWINGS
(CONTINUED)

REV	DESCRIPTION	DATE
B	ADDED NOTE 1	05/04/01

NOTES:

1 ADAPTS 352 STYLE NOSES TO 202 INSTALLATION TOOL.

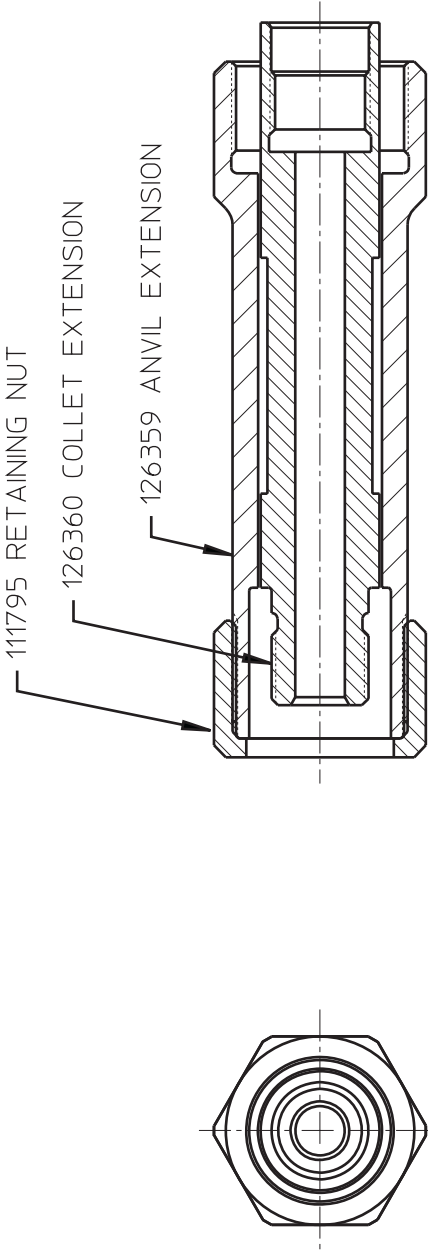


HUCK INTERNATIONAL, INC., I.S.D. 1 CORPORATE DRIVE, P.O. BOX 2270 KINGSTON, NEW YORK 12401			
ANVIL & COLLET EXTENSION ASSY 6.00" EXTENSION			
DET: MP	CK:	DATE: 11/29/00	
FOC.	A	126358	FAC.



NOSE ADAPTER MATRIX AND DRAWINGS
(CONTINUED)

REV	DESCRIPTION	DATE
B	ADDED NOTE 1	05/04/01

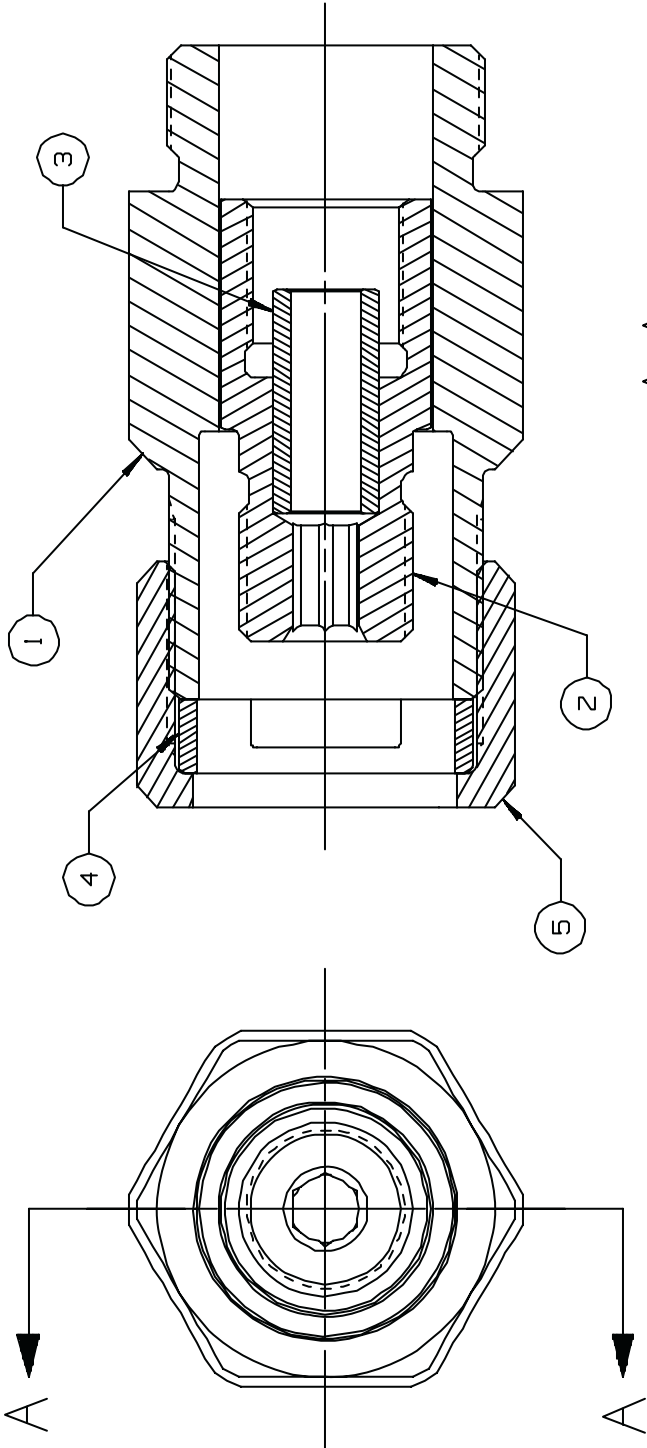


Ⓑ NOTES:

- 1 ADAPTS 352 STYLE NOSES TO 202 TOOL

HUCK INTERNATIONAL, INC., I.S.D. 1 CORPORATE DRIVE, P.O. BOX 2270 KINGSTON, NEW YORK 12401			
ANVIL & COLLET EXTENSION ASSY 3.00" EXTENSION			
DET: MP	CK:	DATE:	11/29/00
FOC.	A	126361	
FAC.			

REV	DESCRIPTION	DATE
A	RELEASE	11/30/04



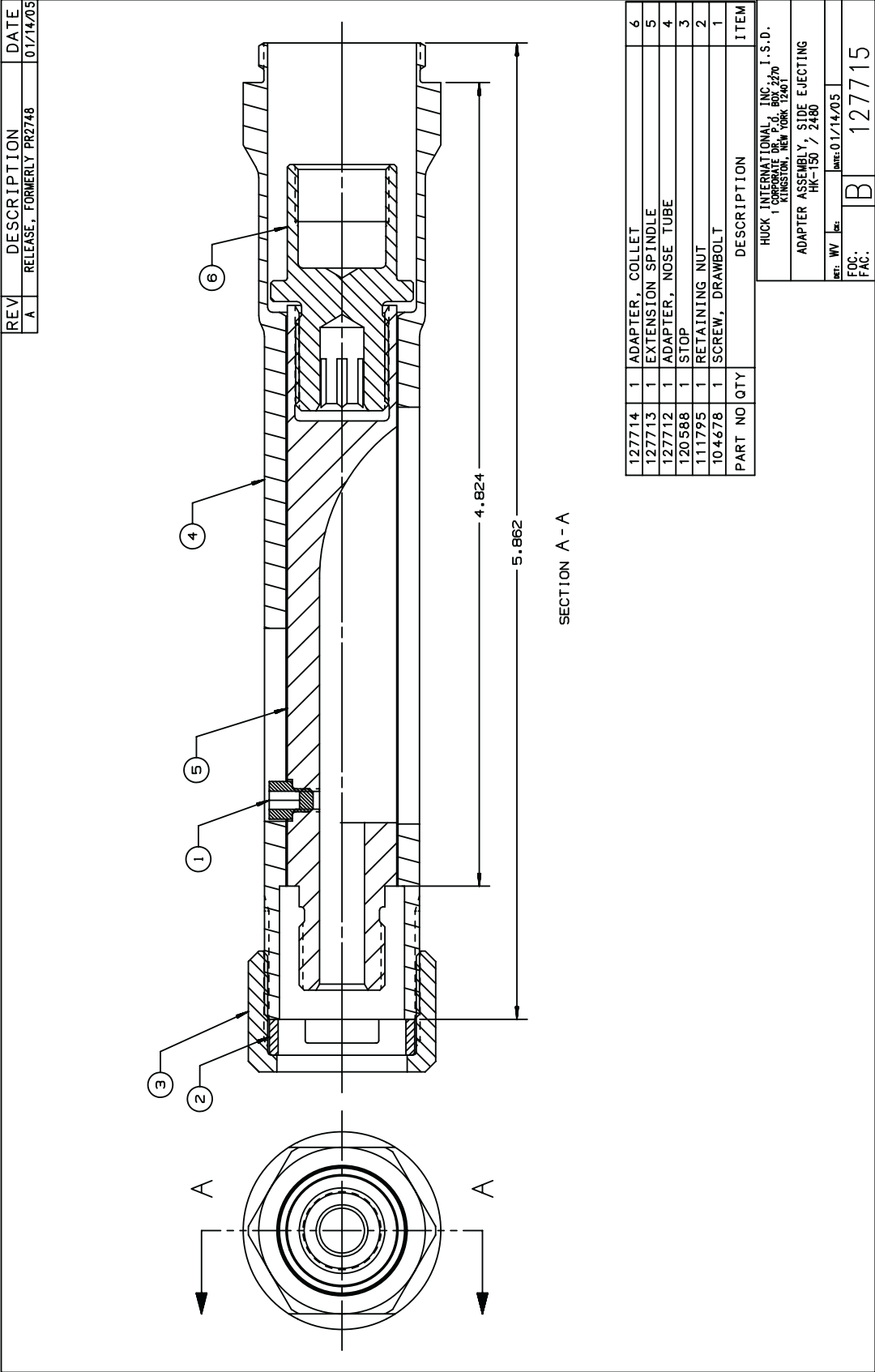
SECTION A - A

PART NO	QTY	DESCRIPTION	ITEM
111795	1	RETAINING NUT	5
120588	1	ROTATABLE STOP	4
127674	1	PINTAIL TUBE	3
127672	1	EXTENSION ADAPTER	2
127673	1	NOSE ADAPTER	1

NOTES:

1 FOR USE WITH PT 4000 TOOL AND HUCK (244 STYLE) NOSE ASSEMBLIES.

HUCK INTERNATIONAL, INC., I.S.D. 1 CORPORATE DR., P.O. BOX 2270 KINGSTON, NEW YORK 12401	
ADAPTER ASSEMBLY	
PT 4000	
DET: WV	DATE: 11/30/04
FOC: A	127671
FAC:	



REV

A

DESCRIPTION

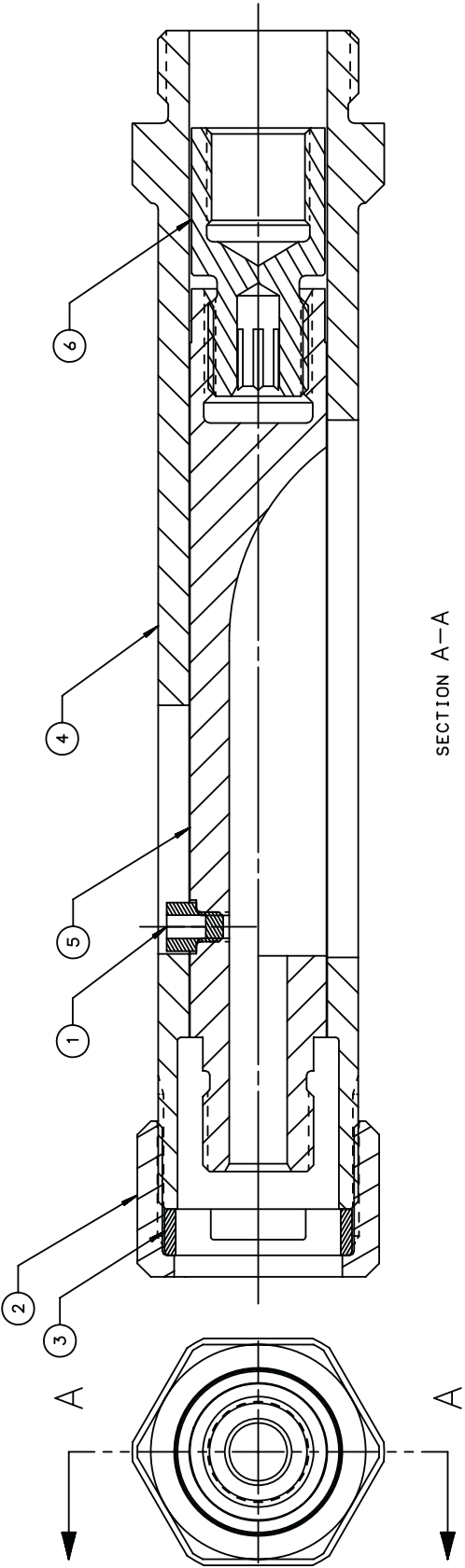
RELEASE, FORMERLY PR2845

DATE

01/17/05

NOTES:

1 SHIP WITH SHIM P/N: 89140 (2 EA.).



127722	1	EXTENSION, ADAPTER	6
127721	1	EXTENSION, SPINDLE	5
127720	1	ADAPTER, NOSE TUBE	4
120588	1	STOP	3
111795	1	NUT, RETAINING	2
104678	1	SCREW, DRAWBOLT	1
PART NO	QTY	DESCRIPTION	ITEM

HUCK INTERNATIONAL, INC. I.S.D.

1 CORPORATE DR. P.O. BOX 2270

KINGSTON, NEW YORK 12401

ADAPTER ASSEMBLY, SIDE EJECTING

PI 4000

DEF: WV

DR:

DATE: 01/17/05

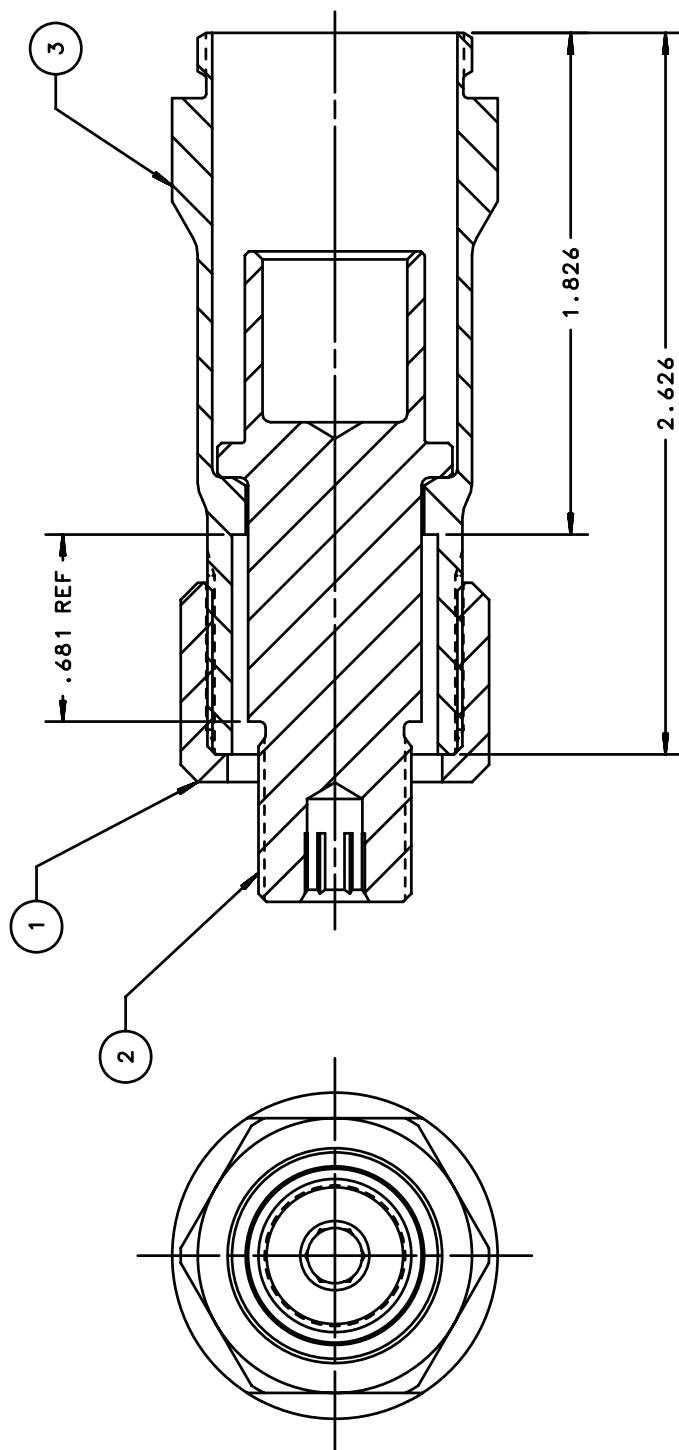
FOC:

FAC:

B

127723

REV	DESCRIPTION	DATE
A	RELEASE	6/20/05



127858	1	COLLET ADAPTER	3
127853	1	ADAPTER	2
111795	1	RETAINING NUT	1
PART	QTY	DESCRIPTION	ITEM

HUCK INTERNATIONAL, INC. I.S.D.
1 CORPORATE DR., 3RD. FLOOR
KINGSTON, NEW YORK 12401

ADAPTER ASSEMBLY
HK-150

DET. MMV [initials] DATE: 6/20/05

FOC. FAC. B 127863

NOSE ADAPTER MATRIX AND DRAWINGS **(CONTINUED)**

