



# FSI

# FASTENING SYSTEMS INTERNATIONAL

## The F4000 Series Close Edge Distance (CED) Nose Assemblies



### CED Pulling Head Assembly



**R**eacting to the airframe sheet metal artisans' need for improved close edge distance (CED) nose assemblies for single action blind rivets, blind bolts, and lockbolts, FSI is pleased to offer the **F4000 Series CED Nose Assemblies**. Fitting conveniently onto the most popular aerospace quality air-hydraulic and cordless riveters, the F4000 Series CED Nose Assemblies are available in a 1.5" and 3.0" configurations eliminating the need in many cases to utilize much more expensive offset pulling head assemblies. The F4000 Series CED nose assemblies are available in all sizes from 3/32" diameter thru 1/4" diameter for most all single action, straight pull aerospace blind rivets and blind bolts, as well as 5/32" and 3/16" diameter Lockbolts. These CED nose assemblies offer maximum capability for minimum edge distance applications where a straight nose assembly may be utilized. For a complete listing of all F4000 Series CED nose assemblies, please see the back of this bulletin. For fasteners not currently covered please consult your local FSI representative or contact our factory at (800) 344-2393 or e-mail us at [sales@fsirivet.com](mailto:sales@fsirivet.com).

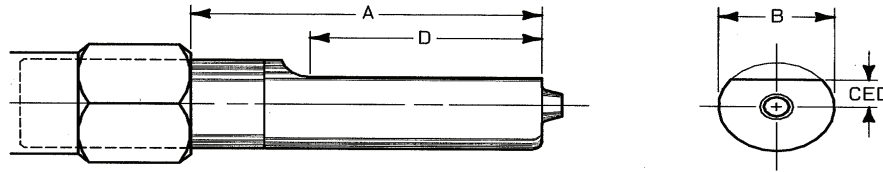
Made in USA

Patent # 7,530,155

GSA

Cage Code# 64878  
Contract # GS-06F-0009L

PO Box 1372 • 1206 East MacArthur St. Sonoma, CA 95476  
800-344-2393 • (707) 935-1170 • Fax: (707) 935-1828  
[www.fsirivet.com](http://www.fsirivet.com) • [sales@fsirivet.com](mailto:sales@fsirivet.com)

**FSI****FASTENING SYSTEMS  
INTERNATIONAL****The F4000 Series Close Edge Distance (CED) Nose Assemblies****CLOSE EDGE DISTANCE  
PULLING HEAD SPECIFICATIONS****Installs the MS90353/54 S & U Type Blind Bolts**

PART NO.	DESCRIPTION	A	B	CED	D
F4049-05CED	5/32 NAS LOCKBOLT, CED. STD	2.27	.632	.214	1.50
F4050-05CED	5/32 NAS LOCKBOLT, CED. LONG	3.77	.632	.214	3.00
F4055-06CED	3/16 NAS LOCKBOLT, CED. STD	2.27	.700	.230	1.50
F4056-06CED	3/16 NAS LOCKBOLT, CED. LONG	3.77	.700	.230	3.00
F4125-04CED	1/8 NAS1919/1921 SMLS. CED, STD	2.27	.632	.214	1.50
F4126-04CED	1/8 NAS1919/1921 SMLS. CED, LONG	3.77	.632	.214	3.00
F4131-05CED	5/32 NAS1919/1921 SMLS. CED, STD	2.27	.632	.214	1.50
F4132-05CED	5/32 NAS1919/1921 SMLS. CED, LONG	3.77	.632	.214	3.00
F4137-06CED	3/16 NAS1919/1921 SMLS. CED, STD	2.27	.700	.230	1.50
F4138-06CED	3/16 NAS1919/1921 SMLS. CED, LONG	3.77	.700	.230	3.00
F4258-CED	1/8-3/16 NAS9300/M7885, CED, STD	2.27	.632	.214	1.50
F4259-CED	1/8-3/16 NAS9300/M7885, CED, LONG	3.77	.632	.214	3.00
F4301-05CED	5/32 MS90353/54U&S. CED, STD	2.77	.632	.214	1.50
F4302-05CED	5/32 MS90353/54U&S. CED, LONG	3.77	.632	.214	3.00
F4307-06CED	3/16 MS90353/54U&S. CED, STD	2.27	.700	.230	1.50
F4308-06CED	3/16 MS90353/54U&S. CED, LONG	3.77	.700	.230	3.00
F4313-08CED	1/4 MS90353/54U&S. CED, STD	2.27	.748	.270	1.50
F4314-08CED	1/4 MS90353/54U&S. CED, LONG	3.77	.748	.270	3.00

**NOTE: ALL DIMENSION ARE IN INCHES**

Made in USA

Patent # 7,530,155

Cage Code# 64878  
Contract # GS-06F-0009LPO Box 1372 • 1206 East MacArthur St. Sonoma, CA 95476  
800-344-2393 • (707) 935-1170 • Fax: (707) 935-1828  
www.fsirivet.com • sales@fsirivet.com